

**TSUNAMI INUNDATION MAPPING FOR
CAPE HATTERAS, NC
NGDC DEM**

BY

BABAK TEHRANIRAD, JAMES T. KIRBY AND FENGYAN SHI

RESEARCH REPORT NO. CACR-15-12
DECEMBER 2015

Supported by the National Tsunami Hazard Mitigation Program
National Weather Service Grant NA13NWS4670014



CENTER FOR APPLIED COASTAL RESEARCH

Department of Civil and Environmental Engineering
University of Delaware
Newark, Delaware 19716, USA

Abstract

This document reports the development of tsunami inundation maps for the region covered by the NGDC tsunami DEM for Cape Hatteras, NC. Section 1 describes NTHMP requirements and guidelines for this work. The location of the study and the bathymetry data utilized are described. Tsunami sources that potentially threaten the upper East Coast of the United States are briefly discussed. Modeling inputs are described in the Section 3, including model specifications and simulation methods such as nesting approaches used in generating inundation maps. The process of generating inundation maps from tsunami simulation results is described in Section 4, along with other results such as arrival time of the tsunami. GIS data sets and organization, including inundation maps, maximum velocity maps, maximum momentum flux maps, are described in Appendix A. Modeling inputs for simulation are provided in Appendix B for interested modelers. In Appendix C, NTHMP guidelines for inundation mapping are provided.

Contents

1	Introduction	1
2	Background Information about Map Area	1
2.1	Location of coverage, and communities covered	1
2.2	Tsunami sources	2
2.2.1	Coseismic sources	4
2.2.2	Volcanic cone collapse	4
2.2.3	Submarine Mass Failure	5
3	Modeling Inputs	6
3.1	Numerical model	6
3.2	Bathymetric Input Data	7
3.2.1	Cape Hatteras NGDC DEM	7
3.2.2	NGDC Coastal Relief Model (CRM)	8
3.2.3	ETOPO 1	8
3.3	Model Grids	9
3.4	Nesting approach	10
4	Results	15
4.1	Arrival time	16
4.2	Raster Data	17
4.3	Inundation line	25

5 Map Construction	29
Appendix A Gridded Data Information	A-1
Appendix B Modeling inputs	B-1
Appendix C Inundation Mapping Guidelines	C-1

List of Figures

1	Location of the NGDC Cape Hatteras DEM (Taylor et al, 2008). Color bar shows depth values in meters for areas inside of the DEM boundary. . . .	3
2	Locations of the Grids used in this project and also the center of simulated Cape Fear Slide (SMF source).	11
3	Gauge data at the southeastern edge of Grid A for coseismic and volcanic collapse sources	13
4	The sequence of grid nesting. The figure on the left depicts the Grid A and B as well as the location of the Cape Hatteras DEM. The figure on the right show the 1 arc-sec grids described in Table 1.	14
5	Recorded surface elevation for gauges located in different locations in Cape Hatteras DEM, Ocracoke Island (Blue), Hatteras Island (Red), and Engelhard (Green)	16
6	CVV 80 km^3 slide Inundation Map for the Cape Hatteras DEM with 4 arc-second resolution. Red squares depicts the 1 arc-second resolution domains.	19
7	Inundation depth for CH_1arc_1 domain, A) SMF , B) Coseismic Envelope, C) CVV 80 km^3 slide, and D) CVV 450 km^3 slide. Red box depicts CH_1arc_1 domain boundaries.	20
8	Inundation depth for CH_1arc_2 domain, A) SMF , B) Coseismic Envelope, C) CVV 80 km^3 slide, and D) CVV 450 km^3 slide. Red box depicts CH_1arc_2 domain boundaries.	21

9	Inundation depth for CH_1arc_3 domain, A) SMF, B) Coseismic Envelope, C) CVV 80 km ³ slide, and D) CVV 450 km ³ slide. Red box depicts CH_1arc_3 domain boundaries.	22
10	Inundation depth for CH_1arc_4 domain, A) SMF, B) Coseismic Envelope, C) CVV 80 km ³ slide, and D) CVV 450 km ³ slide. Red box depicts CH_1arc_4 domain boundaries.	23
11	Inundation depth for CH_1arc_5 domain, A) SMF, B) Coseismic Envelope, C) CVV 80 km ³ slide, and D) CVV 450 km ³ slide. Red box depicts CH_1arc_5 domain boundaries.	24
12	(Maximum Momentum Flux Map for Hatteras Island during CVV450 tsunami (Colorbar values are in m^3/s^2)	26
13	(a) Maximum Velocity map for inundated area around Hatteras Island inlet during CVV450 tsunami (b) Maximum Velocity map for Hatteras Island inlet during PR tsunami for offshore areas	27
14	Maximum Vorticity map for the area around Hatteras during CVV450 tsunami	28
15	Tsunami inundation line for Cape Hatteras NGDC DEM area based on tsunami sources simulated in this project. The red line shows the inundation line for the envelope of all sources excluding CVV450. The blue line demonstrates the CVV450 inundation line. The black boxes show the location of the inundation maps discussed in Section 5.	30

16	Inundation map for emergency planning for Ocracoke Island, NC in 1:50,000 scale. The inundated area is covered in red, and the thick red line represents the inundation line for this particular area.	31
17	Inundation map for emergency planning for Hatteras Island, NC in 1:50,000 scale. The inundated area is shown in red, and the thick red line represents the inundation line for this particular area.	32
18	Inundation map for emergency planning for Salvo, NC in 1:60,000 scale. The inundated area is shown in red, and the thick red line represents the inundation line for this particular area.	33
19	Inundation map for emergency planning for Stumpy Point, NC at 1:50,000 scale. The inundated area is covered in red, and the thick red line represents the inundation line for this particular area.	34
20	Inundation map for emergency planning for Engelhard, NC at 1:30,000 scale. The inundated area is covered in red, and the thick red line represents the inundation line for this particular area.	35
21	Screen shot of the results folder	A-4
22	Screen shot of the input folder	B-2

List of Tables

1	Grid specification for all of the grids used in this project	12
2	Arrival time in minutes after tsunami initiation for different locations and sources in Cape Hatteras DEM based on the location of the gauges. CVV ¹ and CVV ² refer to 80 km ³ and 450 km ³ slide volumes respectively. . . .	17

1 Introduction

The US National Tsunami Hazard Mitigation Program (NTHMP) supports the development of inundation maps for all US coastal areas through numerical modeling of tsunami inundation. This includes high-resolution modeling and mapping of at-risk and highly populated areas as well as the development of inundation estimates for non-modeled and low hazard areas. This report describes the development of inundation maps for a region covered by the Cape Hatteras NGDC tsunami DEM (Taylor et al, 2008).

In section 2, background information about the mapped area is provided. Possible tsunami sources that threaten the United States East Coast (USEC), and are considered in this analysis, are described. Modeling inputs are described in section 3. Section 4 presents simulation results and the development of mapping products. The process of obtaining the tsunami inundation line, which is the most significant result of this work, is explained in this section. Three appendices provide information about GIS data storage and content (Appendix A), modeling inputs (Appendix B), and NTHMP inundation mapping guidelines (Appendix C).

2 Background Information about Map Area

2.1 Location of coverage, and communities covered

The National Oceanic and Atmospheric Administration (NOAA), National Geophysical Data Center (NGDC) have generated digital elevation models (DEM) as input for studies focusing on hazard assessment of catastrophes like tsunamis and hurricanes at a number of

U. S. coastal areas. The Cape Hatteras NGDC DEM covers the coastal community of Cape Hatteras, NC (Taylor et al., 2008). The DEM covers the Hatteras, Bodie, and Ocracoke islands, as well as Diamond shoals on the seaward side of Cape Hatteras. Figure 1 shows the coverage area of this DEM. NGDC DEM's are provided in latitude/longitude coordinates with 1/3 arc-second resolution. The vertical datum is mean high water (MHW), and vertical elevations are in meters. More information about the bathymetry data is given in Section 3.2.

2.2 Tsunami sources

A general overview of historic and potential tsunamigenic events in the North Atlantic Ocean is provided by Atlantic and Gulf of Mexico Tsunami Hazard Assessment Group (2008). In this project, tsunami sources that threaten the US East Coast (USEC) were categorized into three main categories, and have been studied separately due to their differences in physics and location. First, two seismically active sources in the Atlantic Ocean were used; a subduction zone earthquake in the Puerto Rico trench, and a simulation of the historic Azores Convergence Zone earthquake of 1755. A far field subaerial landslide due to a volcanic collapse in Canary Islands is also modeled. Finally, near-field Submarine Mass Failures (SMF) close to the edge of USEC continental shelf are used here as well. A brief introduction and references to detailed studies of the sources are provided in this section.

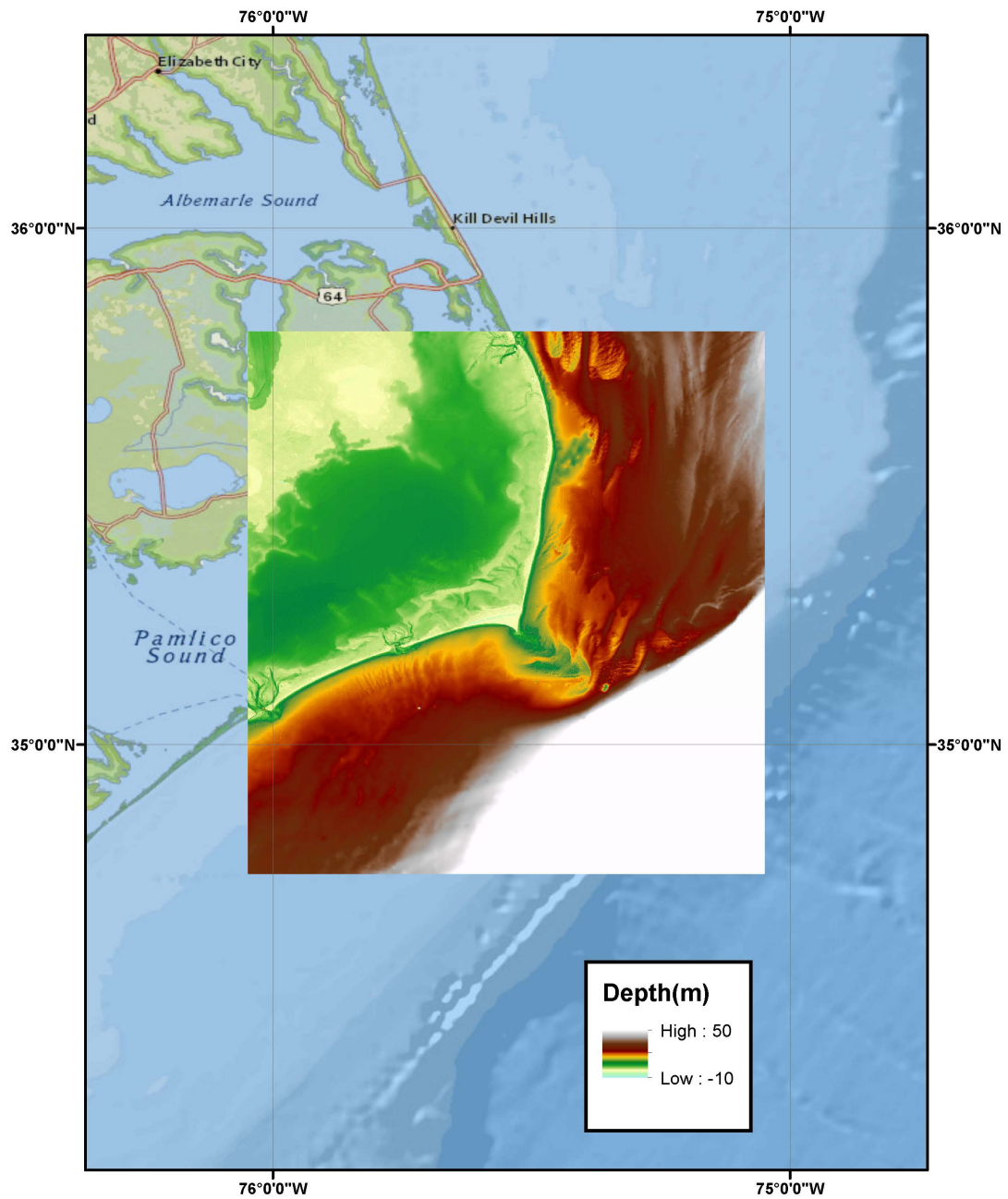


Figure 1: Location of the NGDC Cape Hatteras DEM (Taylor et al, 2008). Color bar shows depth values in meters for areas inside of the DEM boundary.

2.2.1 Coseismic sources

2.2.1.1 Puerto Rico Trench: Previous research has confirmed the possibility of large earthquakes in the Puerto Rico Trench (PRT) in the Caribbean Subduction Zone (CSZ) (e.g. Grilli et al., 2010). These studies implied that an extreme event with return period of 200 to 300 years could be powerful enough ($M_w = 9.0$) to rupture the entire PRT and initiate a tsunami that will influence the USEC. Grilli and Grilli (2013a) have carried out detailed computations for that event to be used as initial conditions for tsunami inundation mapping on the USEC.

2.2.1.2 Azores Convergence Zone: The other coseismic source used here is located on the Azores Gibraltar plate boundary, known as the source of the biggest historical tsunami event in the North Atlantic Basin (Gonzalez et al., 2007). The 1755 Lisbon earthquake ($M_w = 8.6-9.0$) generated tsunami waves with heights between 5 to 15 meters, impacting the coasts of Morocco, Portugal, Newfoundland, Antilles, and Brazil. The procedure for obtaining the initial condition for tsunami propagation is quite similar to the PRT rupture and is discussed in Grilli and Grilli (2013b).

2.2.2 Volcanic cone collapse

In recent years, a potential cone collapse of the volcanic cone Cumbre Vieja (CVV) in the Canary Islands has received attention as a possibly catastrophic source threatening the USEC. In this project, a multi-fluid 3D Navier-Stokes solver (THETIS) was used to compute the volcanic collapse tsunami source (Abadie et al., 2012; Harris et al., 2012). Detailed description of the CVV modeling for use in this project is described in Grilli

and Grilli (2013c). Here, two different slide magnitudes were studied; an 80 km³ slide, representing a plausible event in a return period window on the order of 10,000 years, and a 450 km³ source, consistent with estimates of the maximum event for the geological feature. The magnitude of the latter event is significantly larger than all of the other cases studied in this project. Thus, it was decided to exclude the 450 km³ source from inundation line calculations, and illustrate its results separately as a representation of the worst case scenario condition. This is due to the fact that this source return period is expected to be much more than 10,000 years.

2.2.3 Submarine Mass Failure

The US East Coast is fronted by a wide continental shelf, which contributes to the dissipation of far-field tsunami sources, and diminishes the damage caused by simulated waves from these sources on the coastline. On the other hand, it has been noted in literature (e.g. Grilli et al. 2014) that there is a potential of a Submarine Mass Failure (SMF) on or near the continental shelf break, causing tsunamis that affect adjacent coastal areas. Considering the fact that the only tsunami event that has caused fatalities on the US East Coast was an SMF tsunami (Grand Banks, 1929), it is necessary to study possible impacts and consequences of such catastrophes with respect to heavily populated coastal communities on the USEC. For this region, a slide near Cape Fear was modeled as the SMF source. The process of obtaining the initial condition for near-shore propagation and inundation modeling for this source is comprehensively documented in Grilli et al. (2013). The landslide movement is simulated with the NHWAVE model (Ma et al., 2012; Tehranirad et al., 2012) and the results shown here are interpolated into 500 meter grids for propagation and

inundation modeling 800 seconds after slump movement is initiated (Grilli et al., 2013).

3 Modeling Inputs

3.1 Numerical model

Tsunami propagation and inundation in this study is simulated using the fully nonlinear Boussinesq model FUNWAVE-TVD (Shi et al, 2012a). FUNWAVE-TVD is a public domain open-source code that has been used for modeling tsunami propagation in ocean basins, nearshore tsunami propagation and inland inundation problems. The code solves the Boussinesq equations of Chen (2006) in Cartesian coordinates, or of Kirby et al. (2013) in spherical coordinates. A users manual for each version is provided by Shi et al (2011). FUNWAVE-TVD has been successfully validated for modeling tsunami wave characteristics such as shoaling, breaking and runup by Tehranirad et al. (2011) following NTHMP requirements (see Appendix C). Additional description of modeling specifications and input files is provided in Appendix B.

One key specification in the model is the choice of friction coefficient defined for tsunami simulation. Geist et al. (2009) have performed a study on sensitivity of tsunami elevation with respect to a range of bottom friction coefficients and demonstrated that large coefficients will unrealistically damp tsunami wave height. A review of the existing literature suggests that a value of $C_d = 0.0025$ represents a reasonable friction coefficient for tsunami simulations, as suggested by several researchers (e.g. Grilli et al., 2013), and this value is used here.

3.2 Bathymetric Input Data

3.2.1 Cape Hatteras NGDC DEM

In this project, an integrated bathymetric-topographic digital elevation model (DEM) that generated by National Geophysical Data Center (NGDC) is used for high-resolution inundation mapping for the area around Cape Hatteras, NC (Taylor et al., 2008). This DEM covers the barrier islands around Cape Hatteras as well as shorelines of North Carolina behind it (Figure 1). The horizontal datum is set to be World Geodetic System of 1984 (WGS 84), and the vertical datum is mean high water (MHW). The resolution of the Cape Hatteras DEM is 1/3 arc-second, which, with respect to the study location, means that the North-South resolution is 10.29 meters, and East-West direction grids are 8.40 meters (computed using the latitude in the middle of the domain). All of the runs in this domain have been performed in Cartesian coordinates. Considering the coverage area of this grid, the difference between Cartesian grid and spherical grid (Simply comparing the total length of domain in Cartesian grid and spherical grid) is about 1.5 meters for the whole domain. This means that the average offset for each point is of $O(10^{-6})$ meters. Therefore, because of the negligible differences between Cartesian and spherical grids, this grid was used as Cartesian grid directly to capture fully nonlinear effects of the tsunamis nearshore. Further information about this grid is also given in Table 1.

In the USA the period to determine MHW spans 19 years and is referred to as the National Tidal Datum Epoch. For this project, inundation mapping processes have been performed with MHW datum maps following NTHMP requirements (see Appendix C). There are different approaches to relate MHW to NAVD88 values in the literature, and

also, one can use existing datum conversion models to investigate the difference (e.g. Vdatum generated by NOAA, Park et al., 2003). However, it should be noted that the difference between these values is not constant for the whole domain. For Hatteras, NC, MHW is at NAVD88+32 cm. For Oregon inlet in the north of the domain MHW is at NAVD+10.1 cm.

3.2.2 NGDC Coastal Relief Model (CRM)

Bathymetry data for shelf regions lying outside the NGDC Cape Hatteras DEM are obtained from the NGDC's 3 arc-second U.S. Coastal Relief Model (CRM) (Divins and Metzger, 2003). This data delivers a complete view of the U.S. coastal areas, combining offshore bathymetry with land topography into a unified representation of the coast. However, the deeper part of the Ocean beyond the shelf break is not covered in this data.

3.2.3 ETOPO 1

Bathymetry data for deeper parts of the ocean beyond the shelf break is taken from the ETOPO1 DEM (Amante and Eakins, 2009). ETOPO1 is a 1 arc-minute global relief model of Earth's surface that combines land topography and ocean bathymetry. It was built from numerous global and regional data sets, and is available in "Ice Surface" (top of Antarctic and Greenland ice sheets) and "Bedrock" (base of the ice sheets) versions. Here, we use the Bedrock version in areas where the CRM data is not available.

3.3 Model Grids

Although the Cape Hatteras DEM satisfies the bathymetry data requirements for nearshore simulations, proper offshore bathymetry data is required to model the tsunamis far from the shoreline. Accordingly, Grids A and B (Figure 2) are generated for low resolution modeling over the ocean basin and continental shelf. The input data for the tsunami sources is divided into two categories. The first category consists of Cosiesmic and CVV sources, which were simulated in larger scale ocean-scale model runs, with results recorded on the boundaries of Grid A. The ocean-basin simulations in which this data were recorded were performed with a 16 arc second spherical grid. Grid A was generated in order to keep the nesting scale 4 or less (see section 3.4), and continue the simulation with a 4 arc second grid. The grid sizes of the Grid A are 493.0 m in the north-south direction and 406.2 m in east-west direction (Table 1). On the other hand, the SMF sources fall within the modeled region and are initially modeled with a Cartesian grid using NHWAVE (Ma et al., 2012) with 500 m resolution. The input data was in the form of initial conditions, in contrast to the first category where the data is in form of boundary conditions. Therefore, it was required to generate another grid larger than Grid A to allow space for model sponge layers (or damping regions) on the boundaries. Also, in order to directly use input data as generated by NHWAVE, the grid sizes for Grid B were chosen to be 500 m.

Depth values for these grids were obtained from the 1 arc-minute ETOPO-1 database, while nearshore bathymetry and topography were obtained from the CRM. The horizontal datum and vertical datum are set to be WGS84 and MHW, similar to Cape Hatteras NGDC DEM. These grids are mapped from spherical coordinates into a Cartesian grid. This

means that there are some mapping errors considering the magnitude of these grids. For example, for Grid A, the total difference between two different coordinate systems is 143 m comparing the arc length (spherical) with the straight line (Cartesian). The average offset difference for each grid point between two coordinates is 13 cm, which is negligible considering a grid size of about 500 m. To minimize the error around the mapping area, the grid is lined up close to the Cape Hatteras DEM. The total difference between spherical and Cartesian coordinates for Grid B is 483 meters. The average offset difference between two coordinates is 32 cm for each point of this grid. To make the error as small as possible for the western part of the domain, this grid is also lined up with the mapping area. Therefore, larger error values show up in the eastern and southern parts of the domain, which is not of concern because they fall within the sponge layer region.

Figure 2 shows the location of these grids, as well as the location of the SMF source simulated in this project. Further information about these grids are provided in Table 1. The results of the simulations using Grids A and B were recorded on the Cape Hatteras DEM boundaries in order to perform higher resolution modeling in nearshore regions. This process is described in the next section of this document.

3.4 Nesting approach

In order to save computational time, an appropriate nesting approach is required to decrease the grid sizes from coarser grids offshore to finer grids nearshore. Accurate nesting should insure that there would not be a loss of data on any of the boundaries on which coupling is performed. The nesting scale represents the change in the grid size between two levels of simulation. For example, if the 500 m grid results are used to perform a 125 m

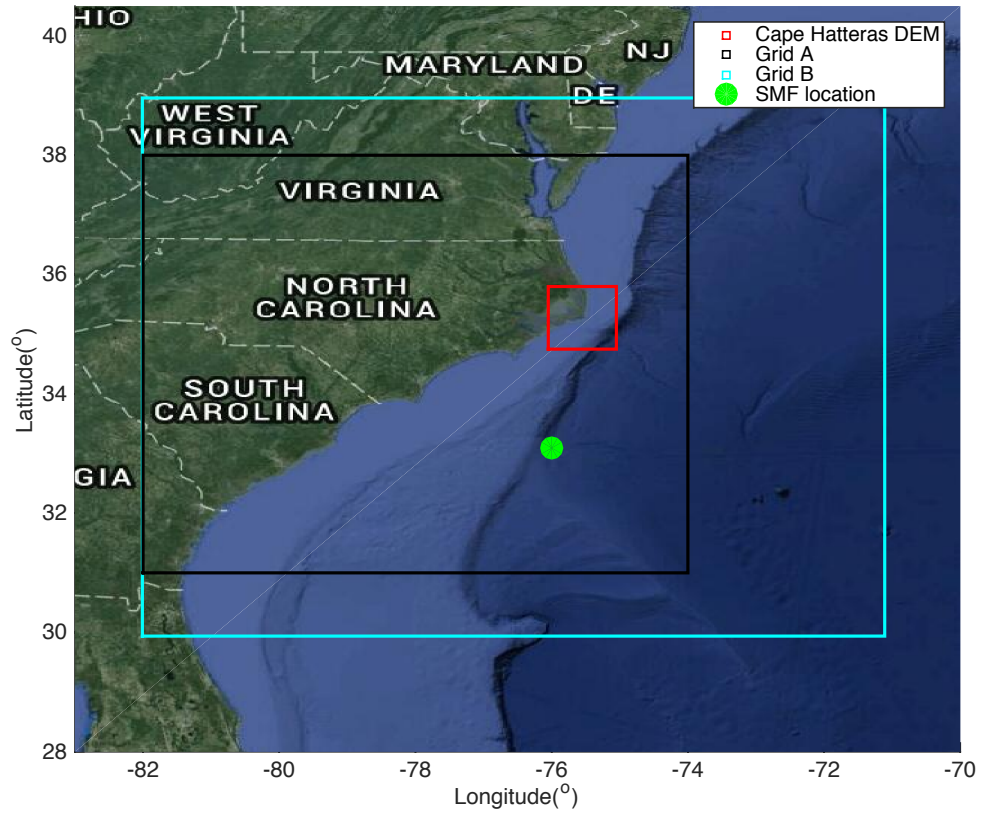


Figure 2: Locations of the Grids used in this project and also the center of simulated Cape Fear Slide (SMF source).

simulation, the nesting scale is 4. Although the coupling capabilities of FUNWAVE-TVD are such that large nesting scales could be used, a largest nesting scale of 4 has been used in this study in order to avoid any loss of data. As described in previous sections of this report, Grids A and B are used to generate data on Cape Hatteras DEM boundaries. Both of these grids have grid sizes of roughly 500 meters and larger. Next, using the recorded data on the boundaries of Cape Hatteras NGDC DEM, simulations with grid sizes of roughly 125.0 meters (about 4 arc-sec) are implemented on this grid to record proper data around four DEMs with resolution of 1 arc-sec (extracted from 1/3 arc-sec Cape Hatteras DEM) in the main region to resolve tsunami inundation inland (and near-shore) with 30 meter (about one arc-sec) grid size. Grilli et al. (2014) have used the similar nesting approach and confirmed the values chosen here. Figure 4 depicts the diagram for the nesting approach performed in this project. In addition, characteristics of each grid are defined in Table 1. All of the runs in this document were performed in Cartesian coordinates.

Grid Name	mx	ny	$dx(m)$	$dy(m)$
Grid A	1810	1575	406.26	492.96
Grid B	2000	2000	500.00	500.00
CH_4arc	900	945	100.84	123.24
CH_1arc_1	1080	1080	25.21	30.81
CH_1arc_2	1080	1080	25.21	30.81
CH_1arc_3	720	1440	25.21	30.81
CH_1arc_4	720	1440	25.21	30.81
CH_1arc_5	1080	1080	25.21	30.81

Table 1: Grid specification for all of the grids used in this project

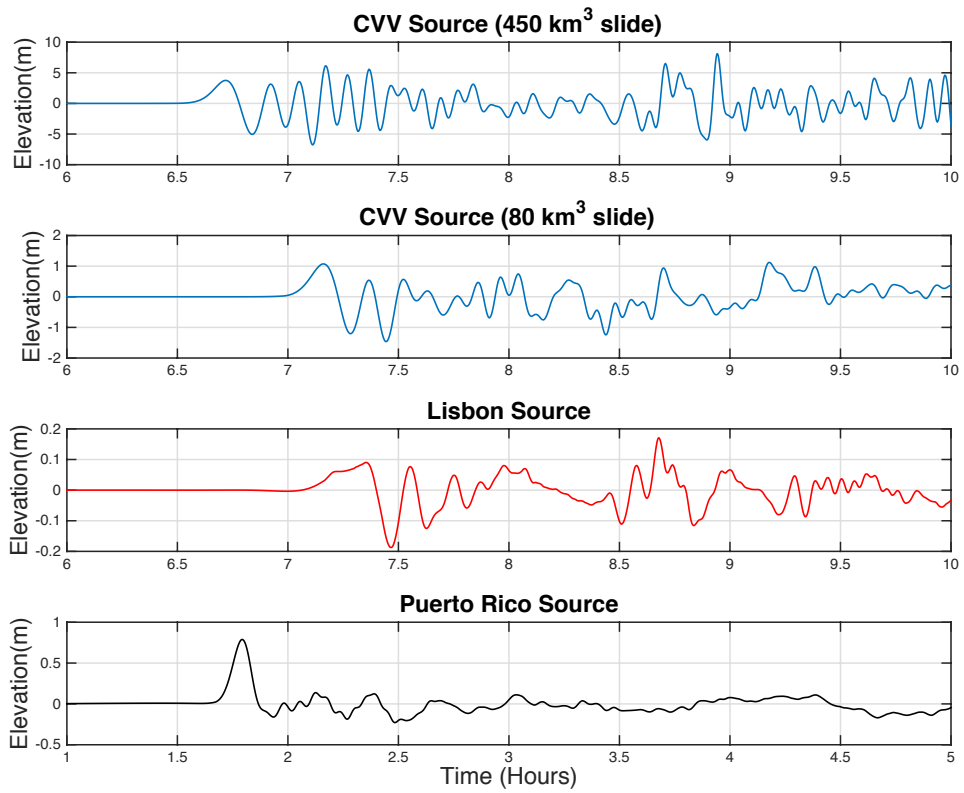


Figure 3: Gauge data at the southeastern edge of Grid A for coseismic and volcanic collapse sources

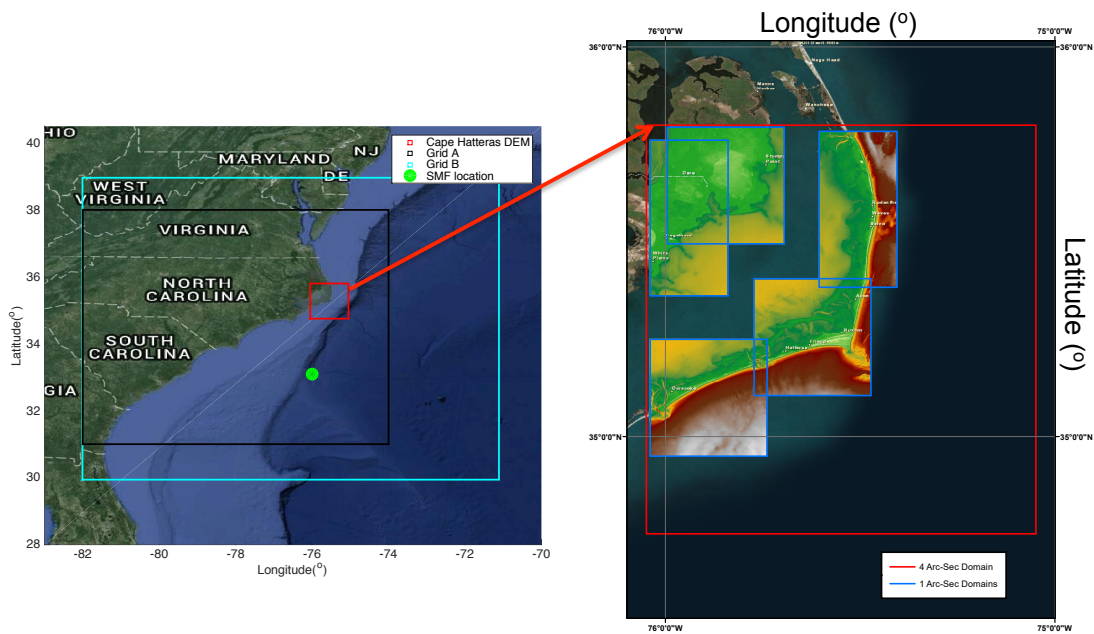


Figure 4: The sequence of grid nesting. The figure on the left depicts the Grid A and B as well as the location of the Cape Hatteras DEM. The figure on the right show the 1 arc-sec grids described in Table 1.

4 Results

This section describes the data recorded for each inundation simulation and its organization as ArcGIS rasters for subsequent map development. The tsunami arrival time is an essential piece of information for evacuation planners. The results are categorized into onshore and offshore results. The onshore results depict the characteristics of the tsunami on the land during inundation. Onshore tsunami effects are mainly demonstrated through three parameters,

1. Maximum inundation depth
2. Maximum velocity
3. Maximum momentum flux

Yeh (2007) reported different forces created by a tsunami on structures and concluded that, having the three mentioned quantities, one can calculate good estimates of forces on onshore structures resulting from tsunamis. Moreover, tsunamis can affect ship navigation; therefore, in order to cover maritime planning and navigational issues during a tsunami, three other parameters are recorded and depicted offshore in this project. These three offshore parameters include,

1. Maximum vorticity
2. Maximum velocity
3. Maximum recorded water surface elevation

All six variables are recorded for each of the modeling domains introduced in Table 1 for all of the tsunami sources discussed in previous sections. Appropriate rasters are generated which are compatible with ArcGIS and other GIS software for mapping purposes. Finally, the inundation line, which is calculated from the envelope of tsunami inundation extent for each source, will be presented.

4.1 Arrival time

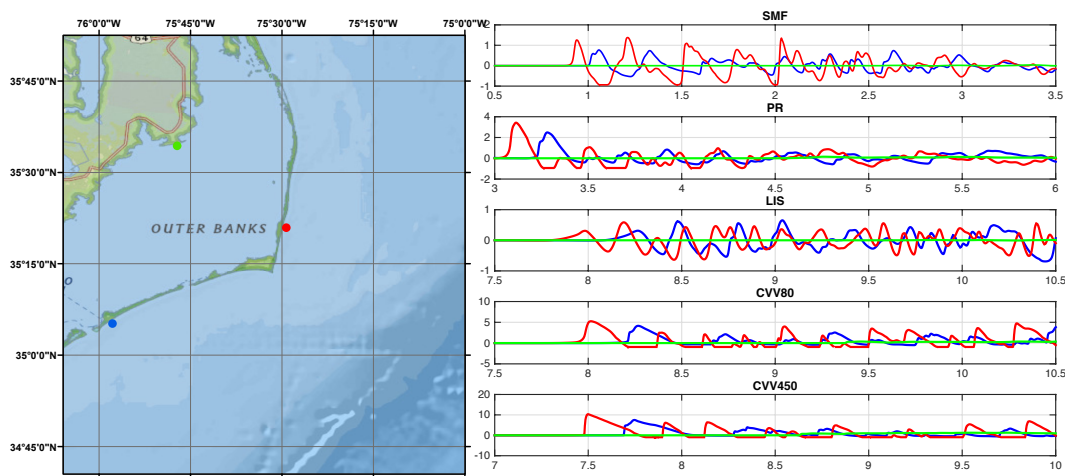


Figure 5: Recorded surface elevation for gauges located in different locations in Cape Hatteras DEM, Ocracoke Island (Blue), Hatteras Island (Red), and Engelhard (Green)

Tsunami arrival time plays an important role in evacuation planning during the occurrence of an event. It is vital to report the arrival time of each tsunami relative to the time of initial detection of an event. Here, the arrival time of the tsunami is based on the time that the first tsunami bore passes the shoreline. Table 2 reports tsunami arrival times for several locations in the Cape Hatteras NGDC DEM. For each location, arrival times for each

modelled tsunami source have been reported. The arrival time for each city in Table 2 is a value for that particular location with about a 5 to 10 minute error margin. Since tsunami propagation in the ocean is constrained by bathymetry, the propagation of tsunamis toward the Cape Hatteras area is quite similar for all of the different sources. The Atlantic coasts of the domain are among the first areas affected by tsunami. However, within about 100 minutes lag difference, tsunami waves will penetrate in behind the barrier and affect the whole domain. Figure 5 demonstrates the location of gauges where the recorded surface elevation was used to assess tsunami arrival time for all of the sources (Table 2). SMF source is clearly the closest source to the location of study, and will reach the entire domain within 1 to 2 hours. The tsunami resulting from a Puerto Rico Trench (PRT) event will affect the Cape Hatteras area between 3 to 4.5 hours after the earthquake. The Lisbon historic event and the Cumbre Vieja Volcanic collapse (CVV) sources have similar transoceanic travel time, and will influence the domain 8 to 10 hours after the incident.

Location	SMF1	PR	LIS	CVV ¹	CVV ²
Hatteras Island	55	180	470	480	450
Ocracoke Island	60	190	490	495	460
Engelhard	150	250	565	565	515

Table 2: Arrival time in minutes after tsunami initiation for different locations and sources in Cape Hatteras DEM based on the location of the gauges. CVV¹ and CVV² refer to 80 km³ and 450 km³ slide volumes respectively.

4.2 Raster Data

One of the most important results of this work is the inundation map corresponding to each tsunami source. In order to facilitate the GIS work, appropriate rasters which are compat-

ible with any GIS software such as ArcGIS are created for all of the grids mentioned in Table 1. As an example, Figure 6 depicts the inundation depth for the CVV 80 km^3 slide for the Cape Hatteras DEM grid with 4 arc-second resolution. In this figure the domains in which 1 Arc-second resolution runs have been performed are displayed as well.

Figures 7-11 show the maximum inundation depth for the 1 Arc-second domains shown in Figure 6. These figures provide a comparison for different sources studied in this project. This includes the inundation map for the SMF source, and the envelope of coseismic sources, as well as both CVV sources. The PRT event is the dominant coseismic source by far, and its inundation pattern is similar to CVV80 source with some differences especially behind the barriers. Since coseismic sources have larger wavelengths, they are able to penetrate behind the barriers with less attenuation in comparison to SMF sources. Figures 7-11 show that the CVV 450 km^3 source is clearly the dominant source for the area studied here, and represents worst case scenario by far in comparison to other sources. However, because its return period is estimated to be beyond 10000 years, it is excluded from inundation line calculations at this point. The 80 km^3 slide CVV has a similar inundation pattern to Puerto Rico source. Except for some few locations CVV80 is the dominant source among all other sources, excluding the CVV 450 km^3 slide source.

The other important criteria required to be reported for inundated area, is the maximum momentum flux. Figure 12 is an example of the maximum momentum flux which is extracted from CH_1arc_2 domain for the CVV450 tsunami. Maximum-recorded velocity is another essential quantity required to be reported for inundated areas. Maximum velocity is also an important factor for navigational issues during a tsunami. Therefore, for better realizations of maximum velocity maps, two different maps are acquired for maximum

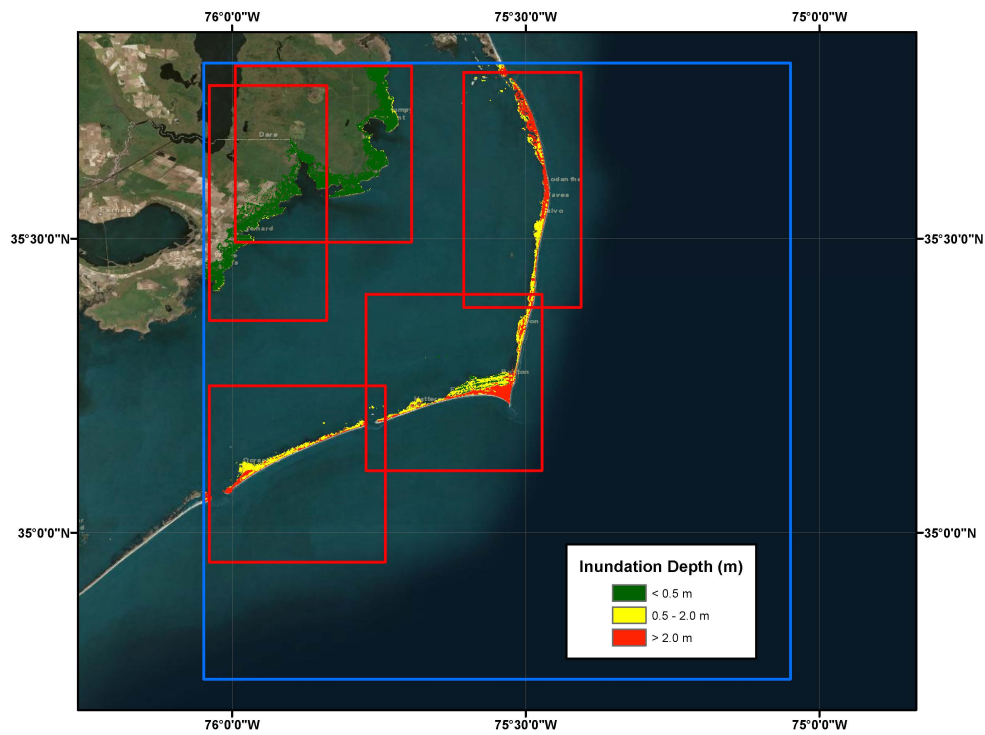


Figure 6: CVV 80 km^3 slide Inundation Map for the Cape Hatteras DEM with 4 arc-second resolution. Red squares depicts the 1 arc-second resolution domains.

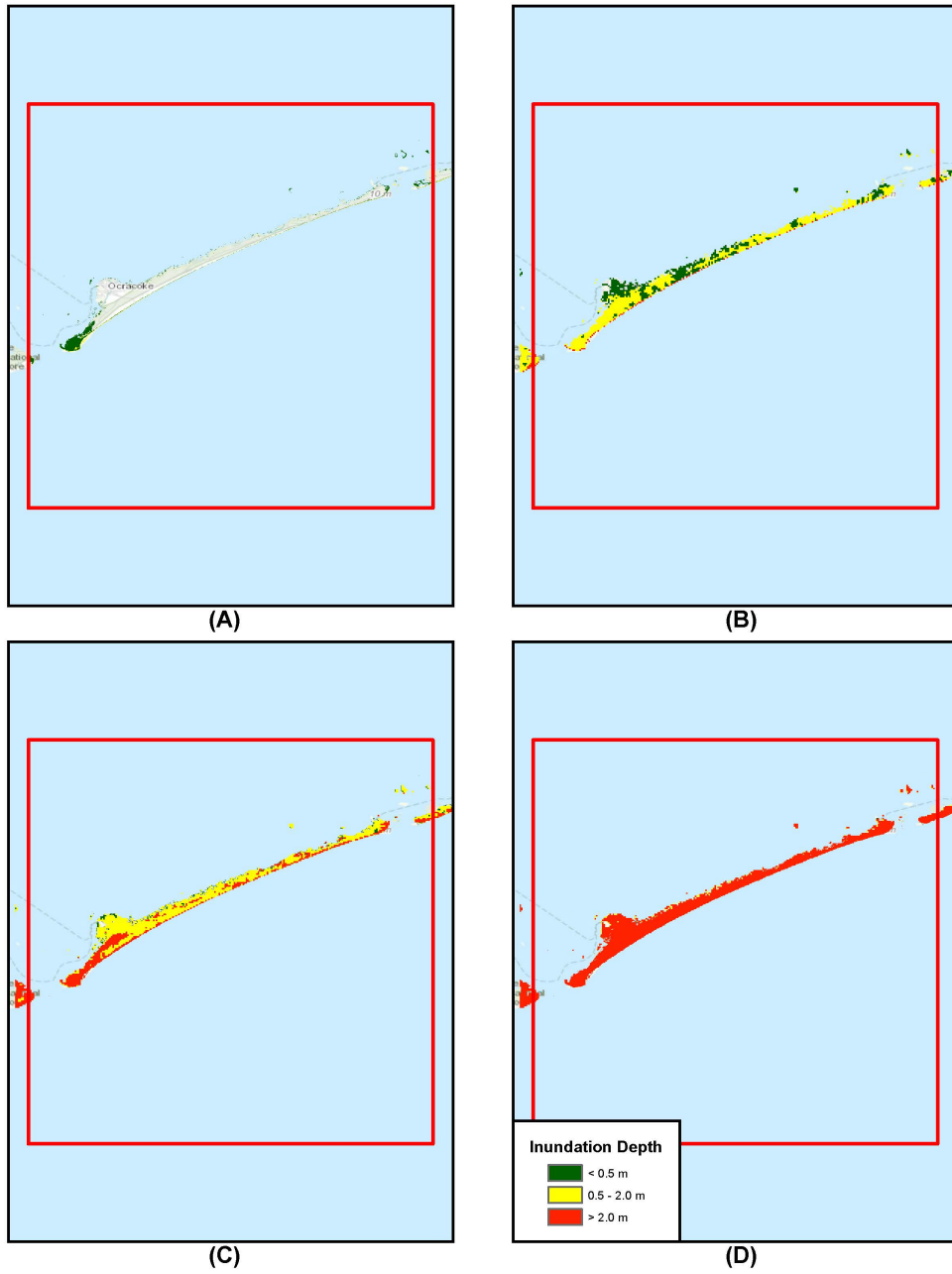


Figure 7: Inundation depth for CH_1arc_1 domain, A) SMF , B) Coseismic Envelope, C) CVV 80 km³ slide, and D) CVV 450 km³ slide. Red box depicts CH_1arc_1 domain boundaries.

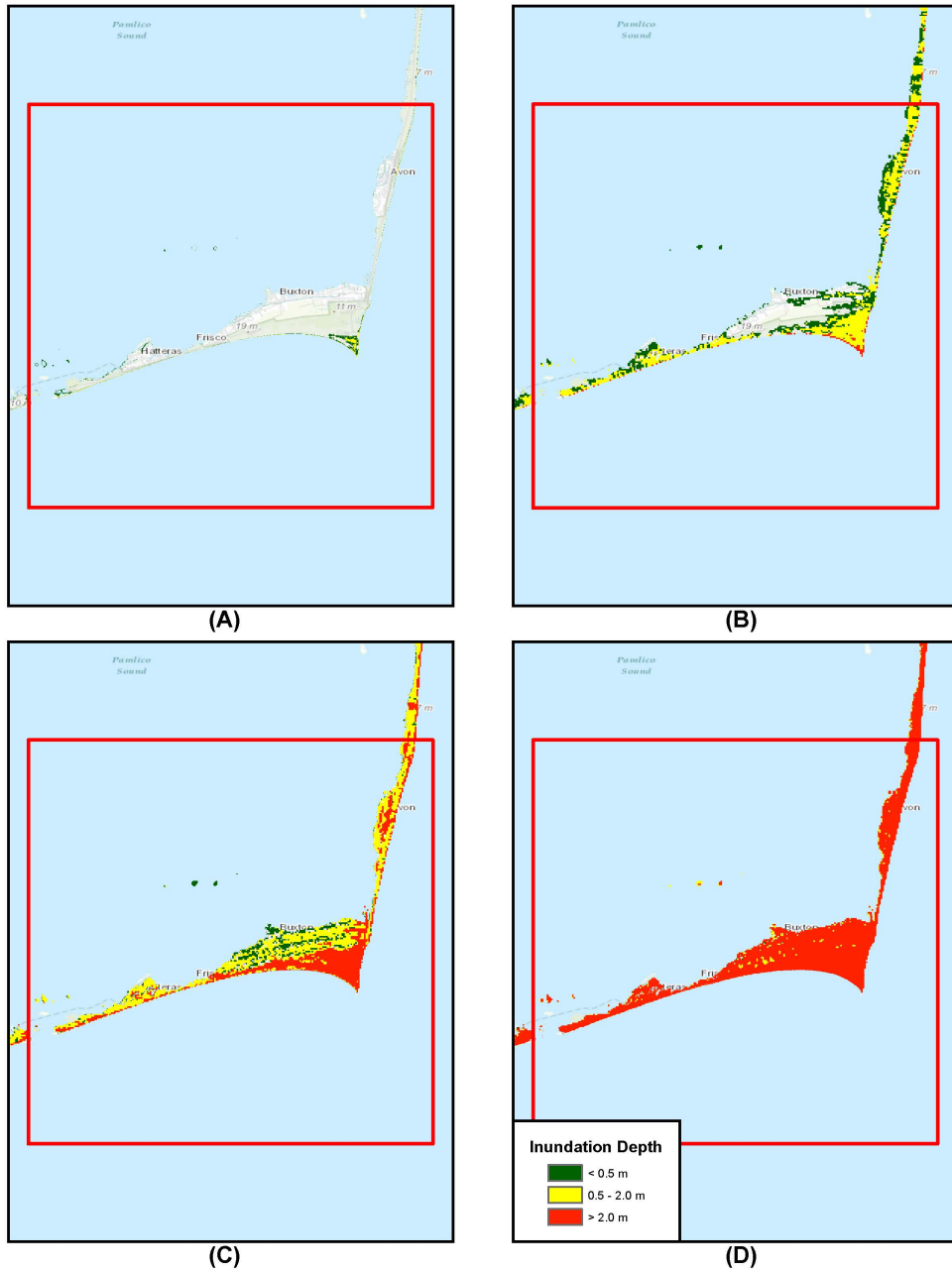


Figure 8: Inundation depth for CH_1arc_2 domain, A) SMF , B) Coseismic Envelope, C) CVV 80 km³ slide, and D) CVV 450 km³ slide. Red box depicts CH_1arc_2 domain boundaries.

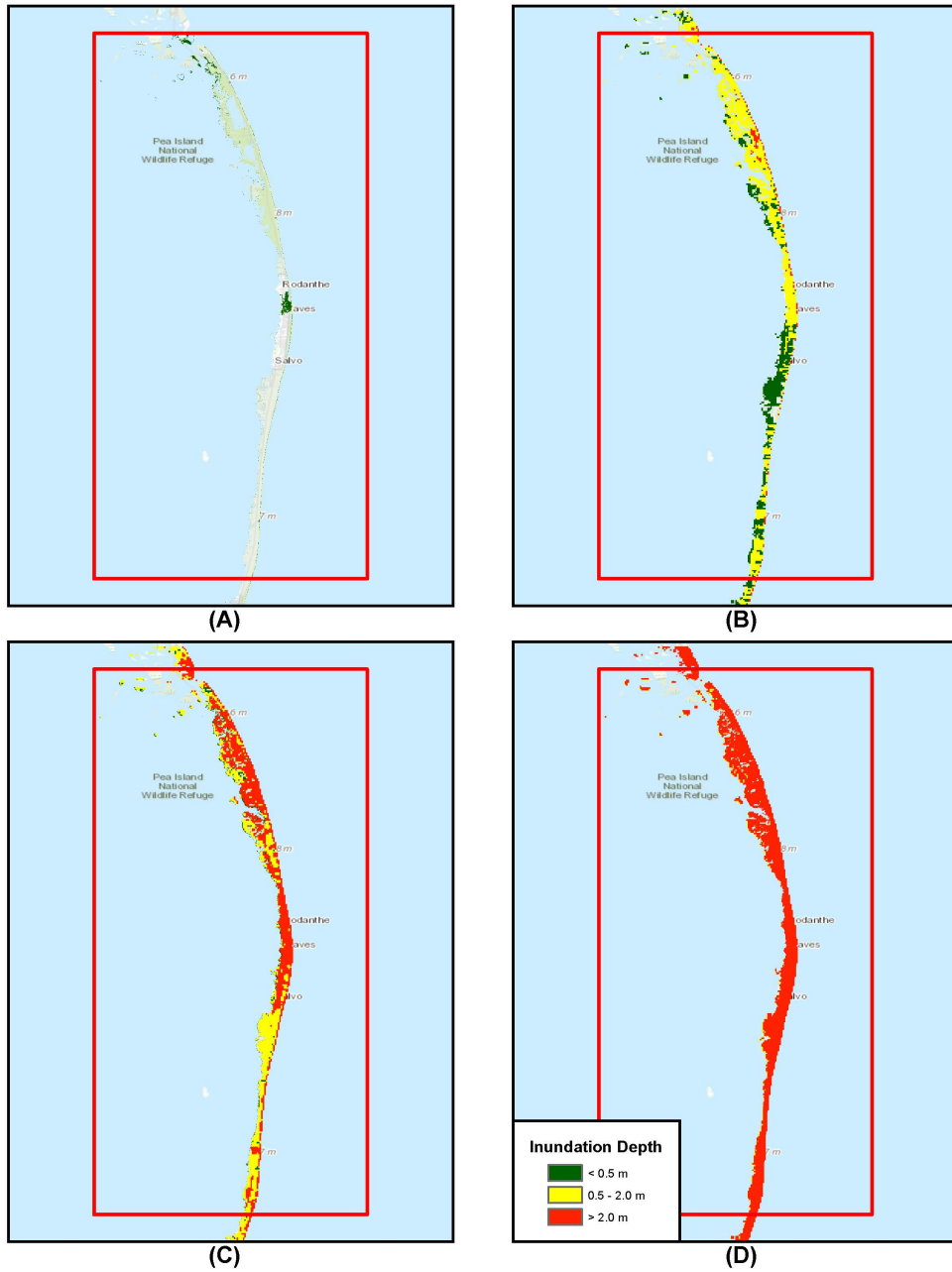


Figure 9: Inundation depth for CH_1arc_3 domain, A) SMF, B) Coseismic Envelope, C) CVV 80 km³ slide, and D) CVV 450 km³ slide. Red box depicts CH_1arc_3 domain boundaries.

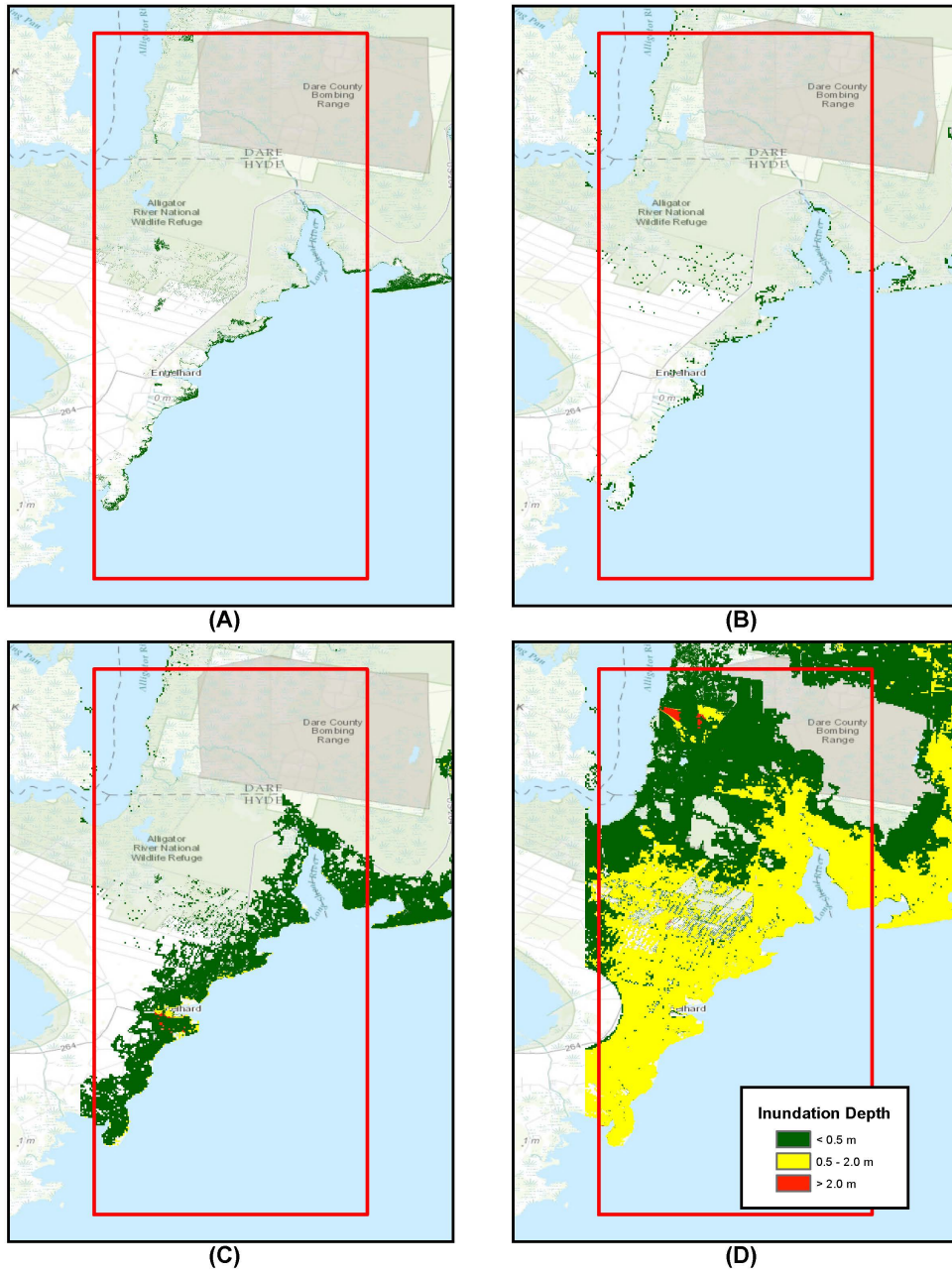


Figure 10: Inundation depth for CH_1arc_4 domain, A) SMF, B) Coseismic Envelope, C) CVV 80 km³ slide, and D) CVV 450 km³ slide. Red box depicts CH_1arc_4 domain boundaries.

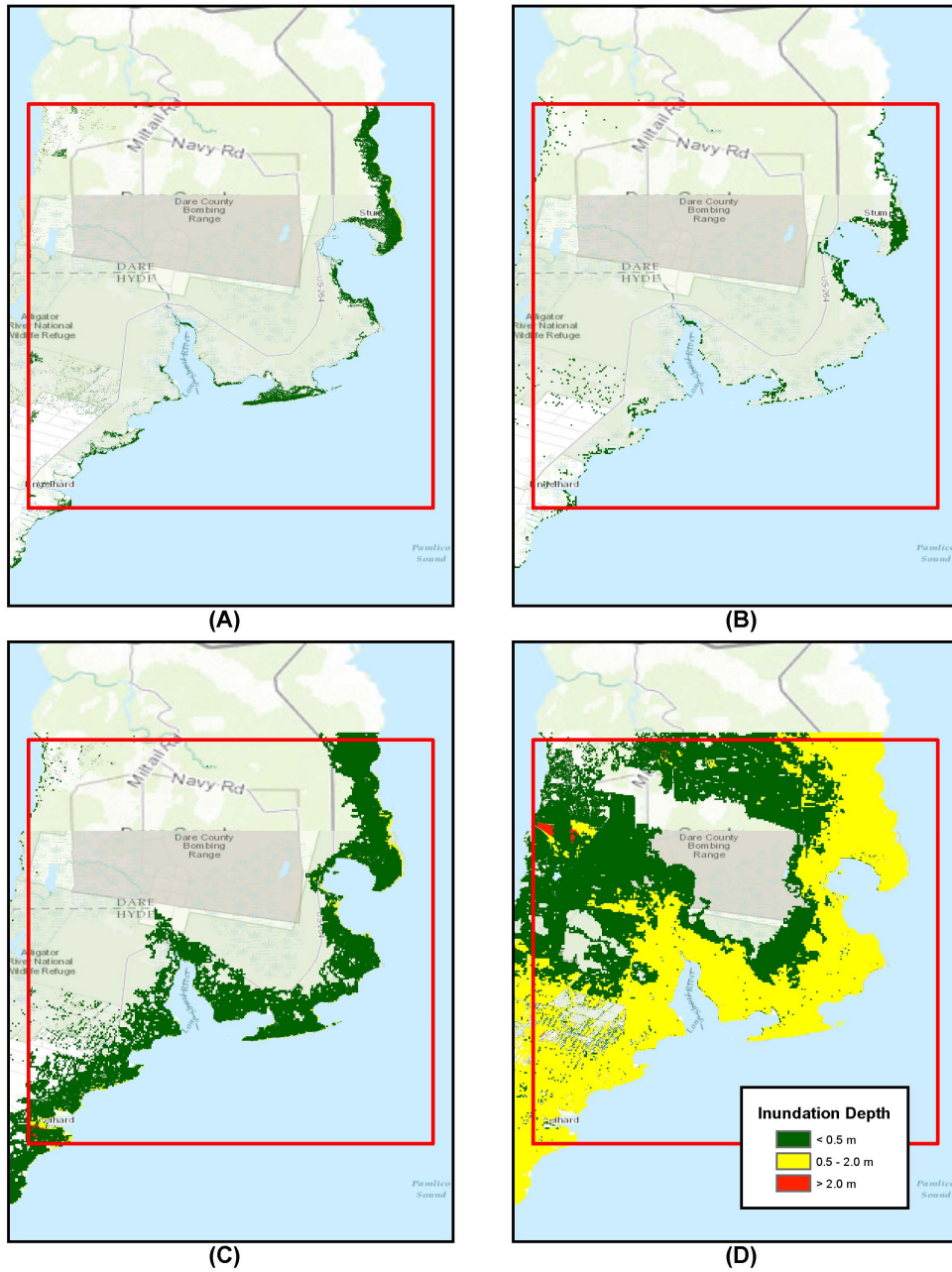


Figure 11: Inundation depth for CH_1arc_5 domain, A) SMF, B) Coseismic Envelope, C) CVV 80 km³ slide, and D) CVV 450 km³ slide. Red box depicts CH_1arc_5 domain boundaries.

velocity on land (basically inundated area) and maximum velocity offshore, which an example of that is shown in Figure 13. Finally, the other important variable for navigational problems during a tsunami, which is the maximum vorticity is also reported with the similar method as the other gridded values (Figure 14). All of the rasters in this project have the Mean High Water (MHW) datum and have ASCII format. In each raster file, the grid size (number of row and columns), the latitude and longitude coordinates corresponding to the southern and western boundaries of the domain, and cell size that defines the resolution of the simulation are included. Also, no data value for each raster is defined as well to limit the information to the inundated areas or other areas of interest. More information about the raster data is provided in Appendix A.

4.3 Inundation line

Tsunami inundation line is the main result of this project. The inundation line demonstrates the envelope of the onshore maximum inundation extent of all tsunamis studied in this work. We extracted the inundation line from inundation depth data. For each location an envelope inundation depth map was generated from all of the tsunami sources. Then, the zero contour of that map represents the inundation line, which is the extent of tsunami inundation inland. As mentioned in the previous section, the 450 km³ CVV source is excluded from the inundation line calculations, and its inundation line is separately demonstrated as the low probability worst case scenario (shown in blue (Figure 15)). The main inundation line is the envelope for all of the other cases studied here (shown in red (Figure 15)). The inundation line for 4 arc-sec and 1 arc-sec domains were very close to each other for all of the sources. For most areas, the 80 km³ CVV source was the dom-

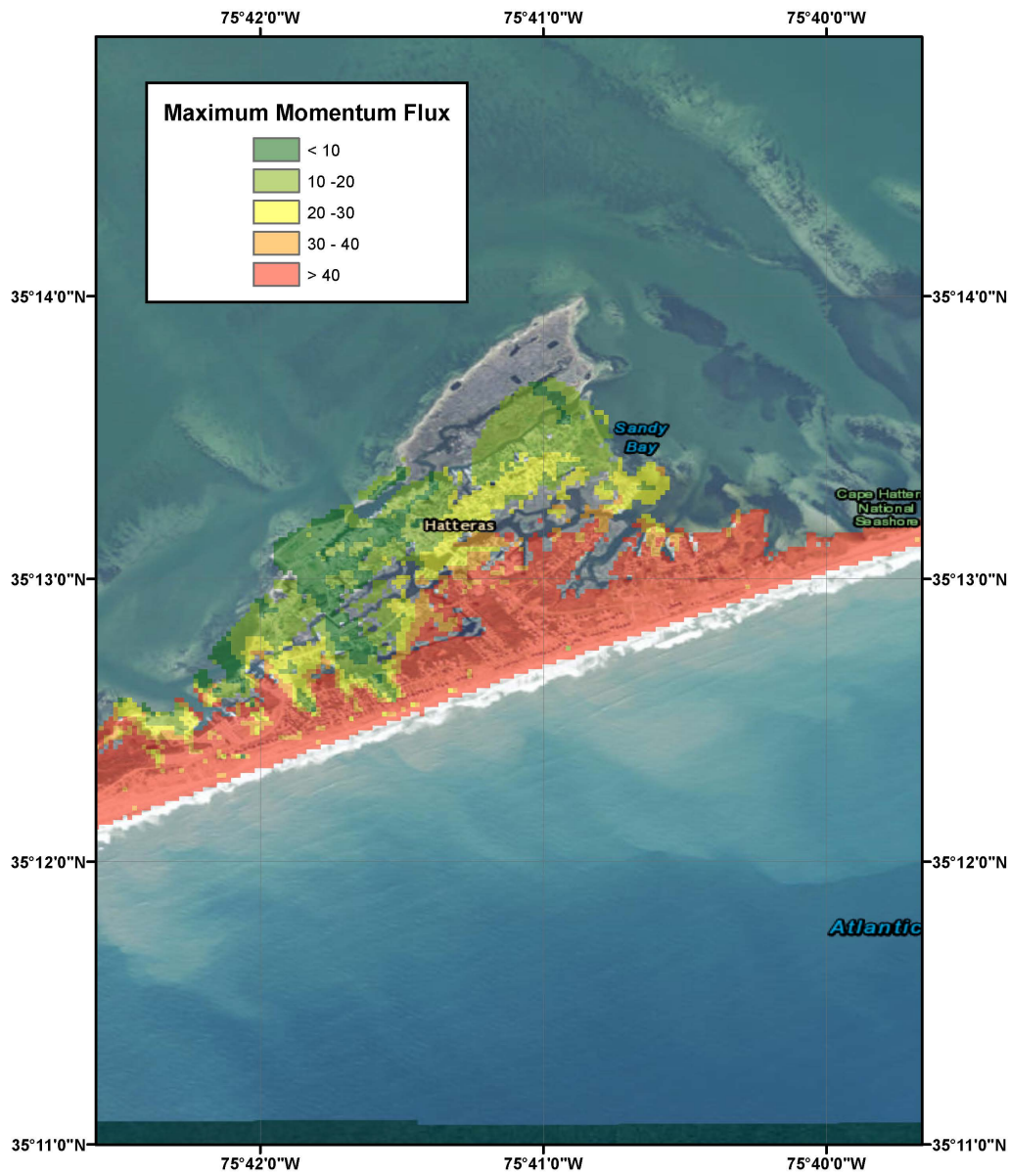


Figure 12: (Maximum Momentum Flux Map for Hatteras Island during CVV450 tsunami
(Colorbar values are in m^3/s^2)

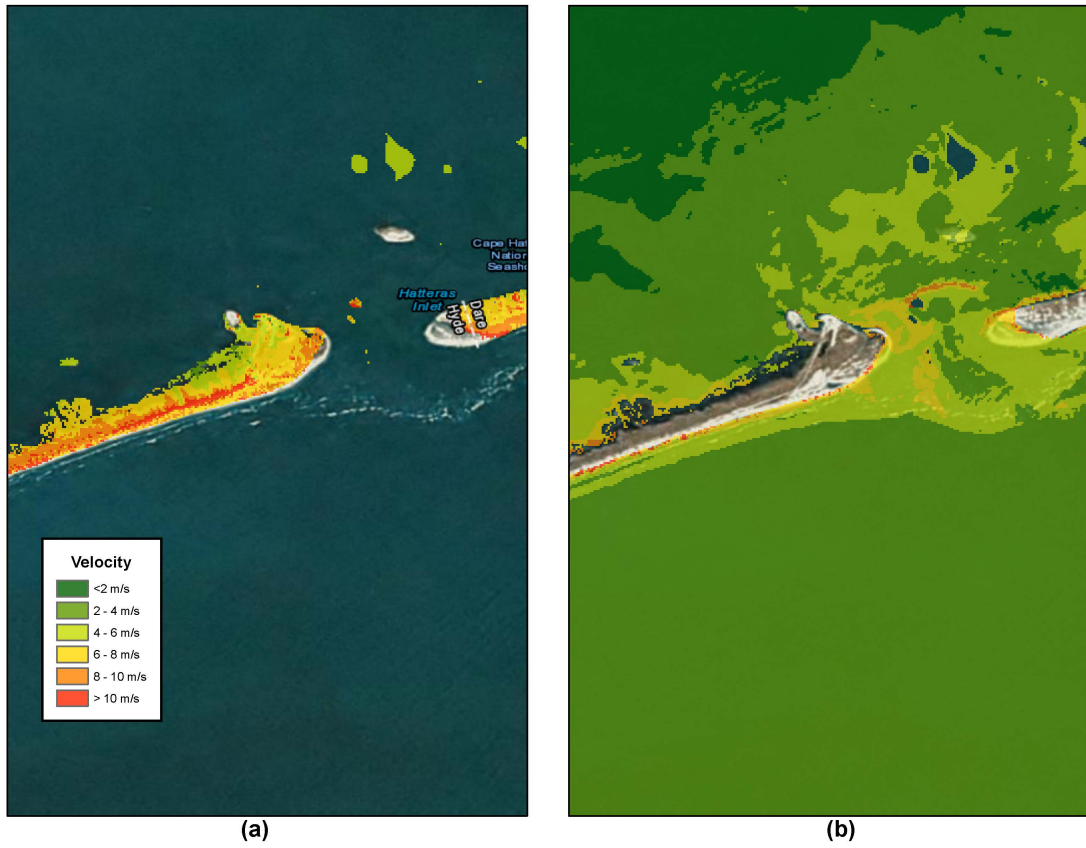


Figure 13: (a) Maximum Velocity map for inundated area around Hatteras Island inlet during CVV450 tsunami (b) Maximum Velocity map for Hatteras Island inlet during PR tsunami for offshore areas

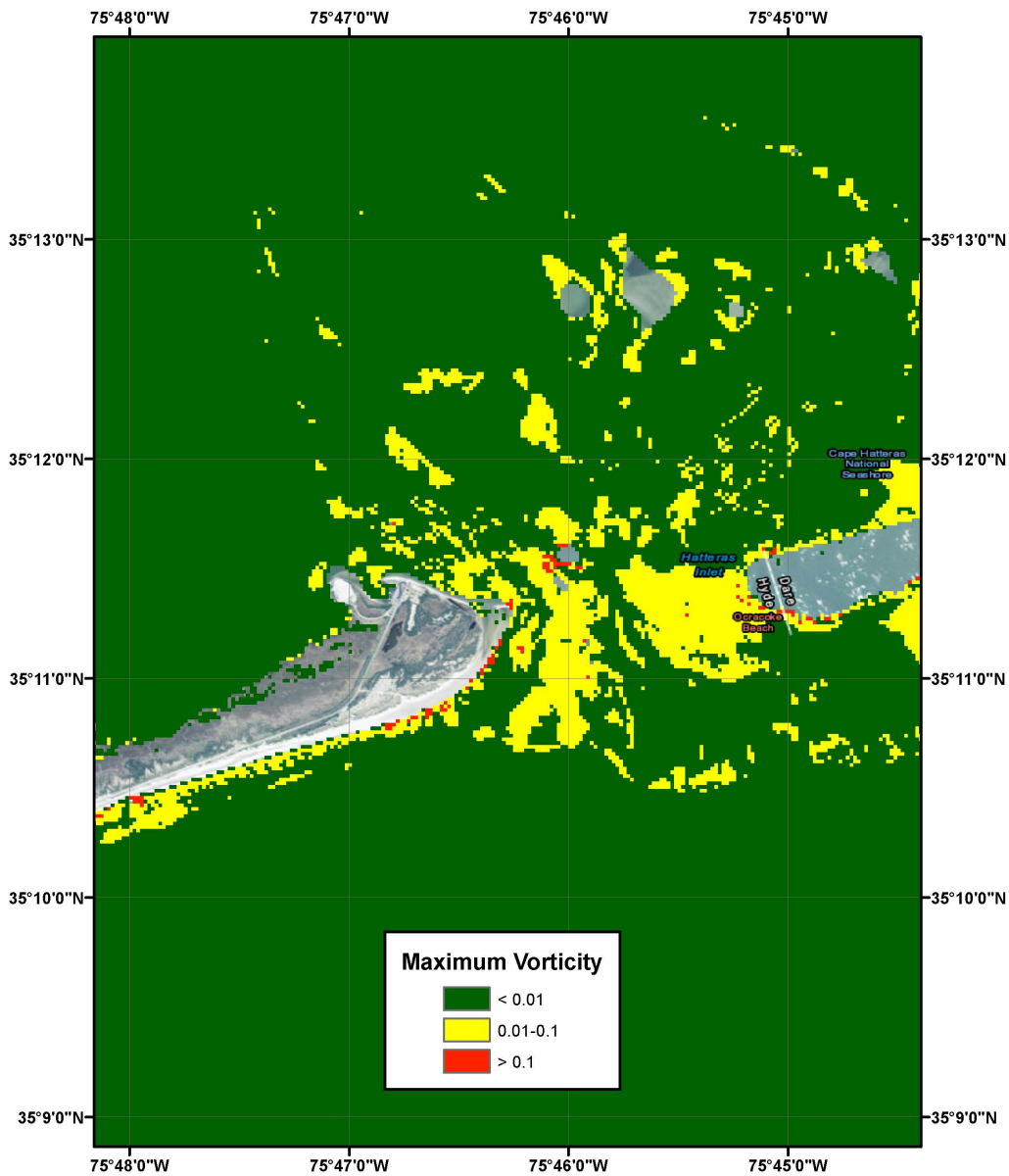


Figure 14: Maximum Vorticity map for the area around Hatteras during CVV450 tsunami

inant source controlling the inundation line; however, in a few locations the inundation line representing the PR source was the dominant tsunami source. It must be noted again that the 450 km³ CVV source would have been the dominant source if it was not excluded from the inundation line calculations. Also, it should be noted that the inundations line in the overlapping areas between different domains were almost identical for most of the cases, which is result of a well performed nesting process. The inundation lines are saved as a shape file (.shp) in order to simplify the inundation map generation process. More information about file formats and names is provided in Appendix A.

5 Map Construction

The final results of this project are inundation maps that can be used for emergency planning. The inundation line shape files (.shp) provide the main resource for constructing these maps. These shape files are mapped over USGS and ESRI topographic maps to construct the inundation map. In addition to the inundated area and the inundation line, information regarding the map construction is provided on each map. The tsunami sources used to obtain these maps are mentioned in these maps. Also, the process of map construction is briefly described on the map. Figures 16-20 show the draft inundation maps for the “Ocracoke, NC”, “Hatteras, NC”, and “Stumpy Point, NC” communities in 1:50,000 scale, as well as “Salvo, NC” in 1:60,000 and “Engelhard, NC” in 1:30,000 scales. The location of these maps are shown in Figure 15. The basemaps for these figures are the USGS topographic maps obtained from (<http://basemap.nationalmap.gov/ArcGIS/rest/services/USGSTopo/MapServer>).

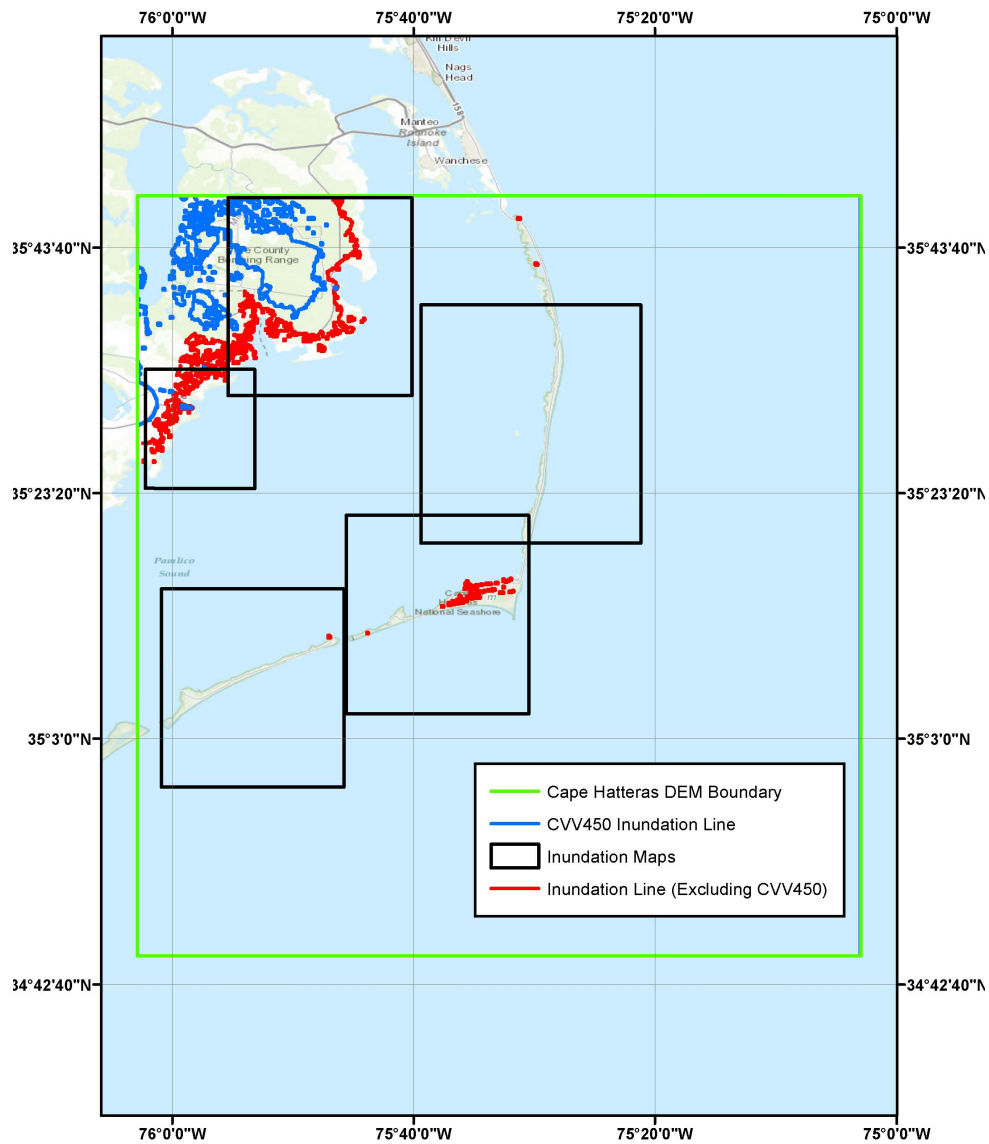
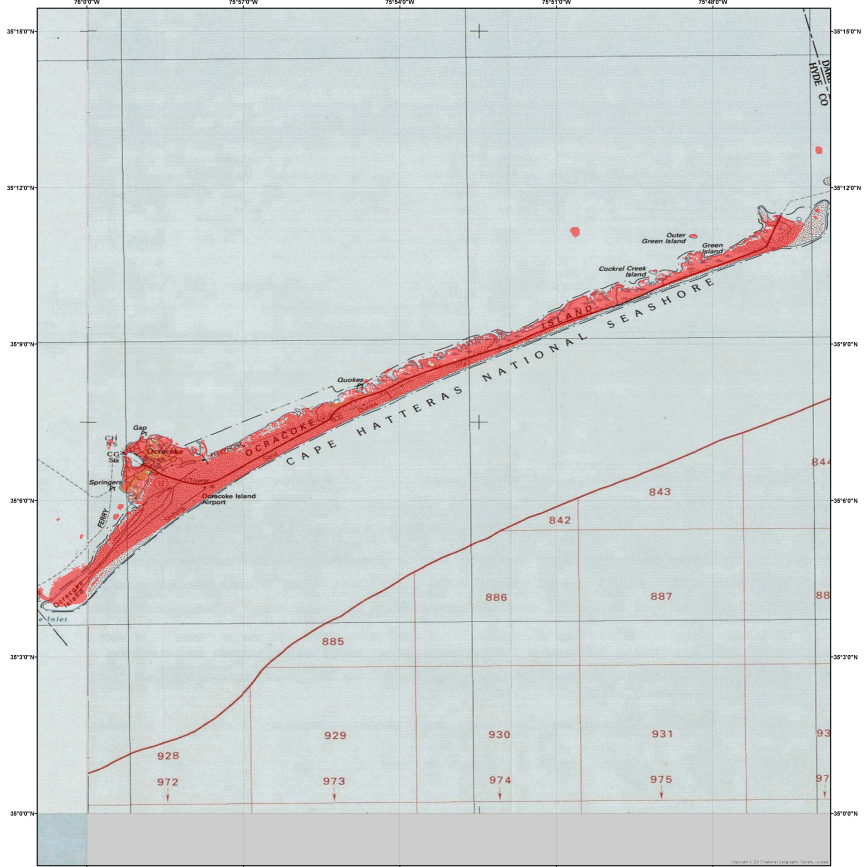


Figure 15: Tsunami inundation line for Cape Hatteras NGDC DEM area based on tsunami sources simulated in this project. The red line shows the inundation line for the envelope of all sources excluding CVV450. The blue line demonstrates the CVV450 inundation line. The black boxes show the location of the inundation maps discussed in Section 5.



METHOD OF PREPARATION

The inundation mapping for Cape Hatteras NGDC DEM was funded by the National Tsunami Hazard Mitigation Program (NTHMP). Here, a brief description is provided about the process this map was generated through. For comprehensive information about the mapping process, one can refer to the inundation report referenced below.

Four sources were modeled for this work: two coseismic, a volcanic cone collapse, and a Submarine Mass Failure Source (SMF). Coseismic sources include a large earthquake in the Puerto Rico Trench (PRT) in the Caribbean Subduction Zone (CSZ), and another earthquake located on Azores-Gibraltar plate boundary. Both of these sources are generated according to the standard Okada method. Cumbre Vieja Volcanic (CVV) collapse located in Canary Islands is another significant tsunami source which threatens the location of study. A multi-fluid 3D Navier-Stokes solver (THETIS) was used to model this source. Finally, a slide close to Cape Fear location was studied as the SMF tsunami. These landslide sources are all simulated with the NTHMP model.

The bathymetry data is provided from the integrated bathymetric-topographic digital elevation model (Atlantic City NGDC DEM), generated by National Geophysical Data Center (NGDC) for high-resolution tsunami inundation mapping. For ocean basin tsunami propagation, the depth values were obtained from the 1 arc-minute ETOPO-1 database, while nearshore bathymetry and topography were obtained from NGDC's Coastal Relief Models, which are typically provided on a 3 arc-second grid.

We used the FUNWAVE-TVD model to simulate tsunami nearshore propagation and estuary inundation. FUNWAVE-TVD is a public domain open-source code that has been used for modeling tsunamis inside ocean basin, nearshore, and their inland inundation process. Four levels of nesting was performed in this project to bring the resolution from 1 arc minute (about 2 kilometers) in the ocean basin down to 1 arcsec (about 30 meters) nearshore. For each region, the highest resolution data was used to generate the inundation line from the extent of the inundated area. The accuracy of the inundation line shown on this map is constrained by several factors such as the accuracy of the models used here, as well as the accuracy of the bathymetry data. The inundation line depicts the envelope of the inundation lines for all the tsunami sources studied, not one particular source.

For further questions about the map contact James T. Kirby (tkirby@udel.edu).

Reference:
 Teshamirad, B., Kirby, J. T., and Shi, F., 2015, "Tsunami Inundation Mapping for Cape Hatteras, NC NGDC DEM", Technical Report No. CACR-15-12, Center for Applied Coastal Research, University of Delaware.

**Tsunami INUNDATION MAP
 FOR EMERGENCY PLANNING**

August, 2015
 Scale 1:50,000

Tsunami sources modeled for Cape Hatteras, NGDC DEM

Source	Location	Arrival Time (hr:min)
Cape Fear Slide	76.00 W, 33.10 N	2.0
Puerto Rico Trench Zone (MR-01)	Caribbean Subduction Zone	4.5
Azores-Gibraltar Convergence Zone (MR-0.9.01)	Gibraltar Strait	6.0
Canary Volca-Volcanic Cone Collapse	Canary Islands	8.0



MAP EXPLANATION

Tsunami Inundation Line

Tsunami Inundated Area

PURPOSE OF THIS MAP

This tsunami inundation map was prepared to help coastal communities to identify their tsunami hazard. This map is not a legal document and does not meet disclosure requirements for real estate transactions nor for any other regulatory purpose. The inundation map has been obtained through using the best available scientific information. The inundation line represents the maximum tsunami runup extent utilizing a number of extreme, yet scientifically realistic, tsunami sources. This map is supposed to portray the worst case scenario and does not provide any further information about the return periods of the events studied here.

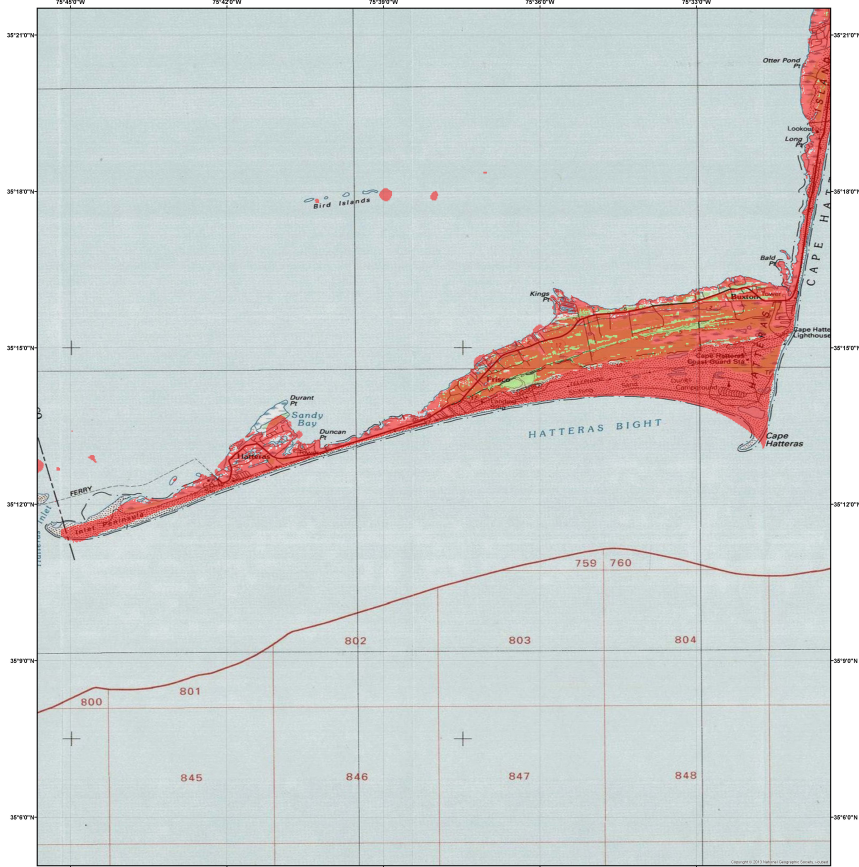
MAP BASE

Topographic base maps prepared by the U.S. Geological Survey as part of the 7.5-minute Quadrangle Map Series (originally 1:24,000 scale). Tsunami inundation line boundaries may reflect updated digital topographic data that can differ significantly from contours shown on the base map.

DISCLAIMER

The National Tsunami Hazard Mitigation Program (NTHMP), the University of Delaware (UD), and the University of Rhode Island (URI) make no representation or warranties regarding the accuracy of this inundation map nor the data from which the map was derived. Neither the NTHMP nor UD shall be liable under any circumstances for any direct, indirect, special, incidental or consequential damages with respect to any claim by any user or any third party on account of or arising from the use of this map.

Figure 16: Inundation map for emergency planning for Ocracoke Island, NC in 1:50,000 scale. The inundated area is covered in red, and the thick red line represents the inundation line for this particular area.



METHOD OF PREPARATION
 The inundation mapping for Cape Hatteras NGDC DEM was funded by the National Tsunami Hazard Mitigation Program (NTHMP). Here, a brief description is provided about the process this map was generated through. For comprehensive information about the mapping process, one can refer to the inundation report referenced below.
 Four sources were modeled for this work, two cosismic, a volcanic cone collapse, and a Submarine Mass Failure Source (SMF). Cosismic sources include a large earthquake in the Puerto Rico Trench (PRT) in the Caribbean Subduction Zone (CSZ), and another earthquake located on Azores-Gibraltar plate boundary. Both of these sources are generated according to the standard Okada method. Cumbre Vieja Volcanic (CVJ) collapse located in Canary Islands is another significant tsunami source which threatens the location of study. A multi-fluid 3D Navier-Stokes solver (THETIS) was used to model this source. Finally, a slide close to Cape Fear location was studied as the SMF tsunami. These landslide sources are all simulated with the NTHMP model.
 The bathymetry data is provided from the integrated bathymetric-topographic digital elevation model (Atlantic City NGDC DEM), generated by National Geophysical Data Center (NGDC) for high-resolution tsunami inundation mapping. For ocean basin tsunami propagation, the depth values were obtained from the 1 arc-minute ETOPO-1 database, while nearshore bathymetry and topography were obtained from NGDC's Coastal Relief Models, which are typically provided on a 3 arc-second grid.
 We used the FUNWAVE-TVD model to simulate tsunami nearshore propagation and estuary inundation. FUNWAVE-TVD is a public domain open-source code that has been used for modeling tsunamis inside ocean basin, nearshore, and their inland inundation process. Four levels of nesting was performed in this project to bring the resolution from 1 arc minute (about 2 kilometers) in the ocean basin down to 1 arcsec (about 30 meters) nearshore. For each region, the highest resolution data was used to generate the inundation line from the extent of the inundated area. The accuracy of the inundation line shown on this map is constrained by several factors such as the accuracy of the models used here, as well as the accuracy of the bathymetry data. The inundation line depicts the envelope of the inundation lines for all the tsunami sources studied, not one particular source.
 For further questions about the map contact James T. Kirby (tkirby@udel.edu).
 Reference:
 Teshamirad, B., Kirby, J. T., and Shi, F., 2015, "Tsunami Inundation Mapping for Cape Hatteras, NC NGDC DEM", Technical Report No. CACR-15-12, Center for Applied Coastal Research, University of Delaware.

Tsunami INUNDATION MAP FOR EMERGENCY PLANNING

August, 2015
 Scale 1:50,000

Tsunami sources modeled for Cape Hatteras, NGDC DEM

Source	Location	Arrival Time (hr)
Cape Fear Slide	76.00 W, 33.10 N	2.0
Puerto Rico Trench Zone (MR-0)	Caribbean Subduction Zone	4.5
Azores-Gibraltar Convergence Zone (MR-0.0)	Gibraltar Strait	6.0
Cumbre Vieja Volcanic Cone Collapse	Canary Islands	6.0

MAP EXPLANATION

Tsunami Inundation Line
 Tsunami Inundated Area

PURPOSE OF THIS MAP

This tsunami inundation map was prepared to help coastal communities to identify their tsunami hazard. This map is not a legal document and does not meet disclosure requirements for real estate transactions nor for any other regulatory purpose. The inundation map has been obtained through using the best available scientific information. The inundation line represents the maximum tsunami runup extent utilizing a number of extreme, yet scientifically realistic, tsunami sources. This map is supposed to portray the worst case scenario and does not provide any further information about the return periods of the events studied here.

MAP BASE

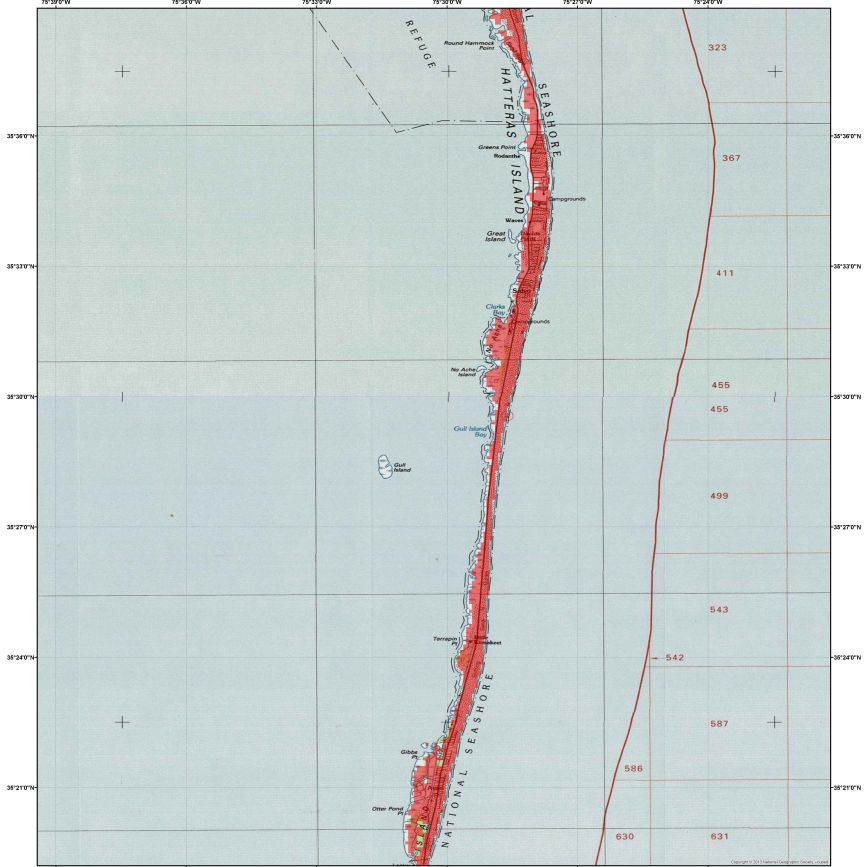
Topographic base maps prepared by the U.S. Geological Survey as part of the 7.5-minute Quadrangle Map Series (originally 1:24,000 scale). Tsunami inundation line boundaries may reflect updated digital topographic data that can differ significantly from contours shown on the base map.

DISCLAIMER

The National Tsunami Hazard Mitigation Program (NTHMP), the University of Delaware (UD), and the University of Rhode Island (URI) make no representation or warranties regarding the accuracy of this inundation map nor the data from which the map was derived. Neither the NTHMP nor UD shall be liable under any circumstances for any direct, indirect, special, incidental or consequential damages with respect to any claim by any user or any third party on account of or arising from the use of this map.



Figure 17: Inundation map for emergency planning for Hatteras Island, NC in 1:50,000 scale. The inundated area is shown in red, and the thick red line represents the inundation line for this particular area.



METHOD OF PREPARATION

The inundation mapping for Cape Hatteras NGDC DEM was funded by the National Tsunami Hazard Mitigation Program (NTHMP). Here, a brief description is provided about the process this map was generated through. For comprehensive information about the mapping process, one can refer to the inundation report referenced below.

Four sources were modeled for this work: two coseismic, a volcanic one collapse, and a Submarine Mass Failure Source (SMF). Coseismic sources include a large earthquake in the Puerto Rico Trench (PRT) in the Caribbean Subduction Zone (CSZ), and another earthquake located on Azores-Gibraltar plate boundary. Both of these sources are generated according to the standard Okada method. Cumbre Vieja Volcanic (CVJ) collapse located in Canary Islands is another significant tsunami source which threatens the location of study. A multi-fluid 3D Navier-Stokes solver (THETIS) was used to model this source. Finally, a slide close to Cape Fear location was studied as the SMF tsunami. These landslide sources are all simulated with the NTHMP model.

The bathymetry data is provided from the integrated bathymetric-topographic digital elevation model (Atlantic City NGDC DEM), generated by National Geophysical Data Center (NGDC), for high-resolution tsunami inundation mapping. For ocean basin tsunami propagation, the depth values were obtained from the 1 arc-minute ETOPO-1 database, while nearshore bathymetry and topography were obtained from NGDC's Coastal Relief Models, which are typically provided on a 3 arc-second grid.

We used the FUNWAVE-TVD model to simulate tsunami nearshore propagation and estuary inundation. FUNWAVE-TVD is a public domain open-source code that has been used for modeling tsunamis inside ocean basin, nearshore, and their inland inundation process. Four levels of nesting was performed in this project to bring the resolution from 1 arc minute (about 2 kilometers) in the ocean basin, down to 1 arcsec (about 30 meters) nearshore. For each region, the highest resolution data was used to generate the inundation line from the extent of the inundated area. The accuracy of the inundation line shown on this map is constrained by several factors such as the accuracy of the models used here, as well as the accuracy of the bathymetry data. The inundation line depicts the envelope of the inundation lines for all the tsunami sources studied, not one particular source.

For further questions about the map contact James T Kirby (tkirby@udel.edu).

Reference:
 Tehranirad, B., Kirby, J. T. and Shi, F., 2015, "Tsunami Inundation Mapping for Cape Hatteras, NC NGDC DEM", Technical Report No. CACR-15-12, Center for Applied Coastal Research, University of Delaware.

Tsunami INUNDATION MAP FOR EMERGENCY PLANNING

August, 2015
 Scale 1:60,000

Tsunami sources modeled for Cape Hatteras, NGDC DEM

Source	Location	Arrival Time (hr:min)
Cape Fear Slide	76.00 W, 33.10 N	2.0
Puerto Rico Trench Zone (PR-TZ)	Caribbean Subduction Zone	4.5
Azores-Gibraltar Convergence Zone (AG-CZ)	Gibraltar Strait	6.0
Cumbre Vieja Volcanic Cone Collapse	Canary Islands	6.0

Center for Applied Coastal Research

MAP EXPLANATION

Tsunami Inundation Line
 Tsunami Inundated Area

PURPOSE OF THIS MAP

This tsunami inundation map was prepared to help coastal communities to identify their tsunami hazard. This map is not a legal document and does not meet disclosure requirements for real estate transactions nor for any other regulatory purpose. The inundation map has been obtained through using the best available scientific information. The inundation line represents the maximum tsunami runup extent utilizing a number of extreme, yet scientifically realistic, tsunami sources. This map is supposed to portray the worst case scenario and does not provide any further information about the return periods of the events studied here.

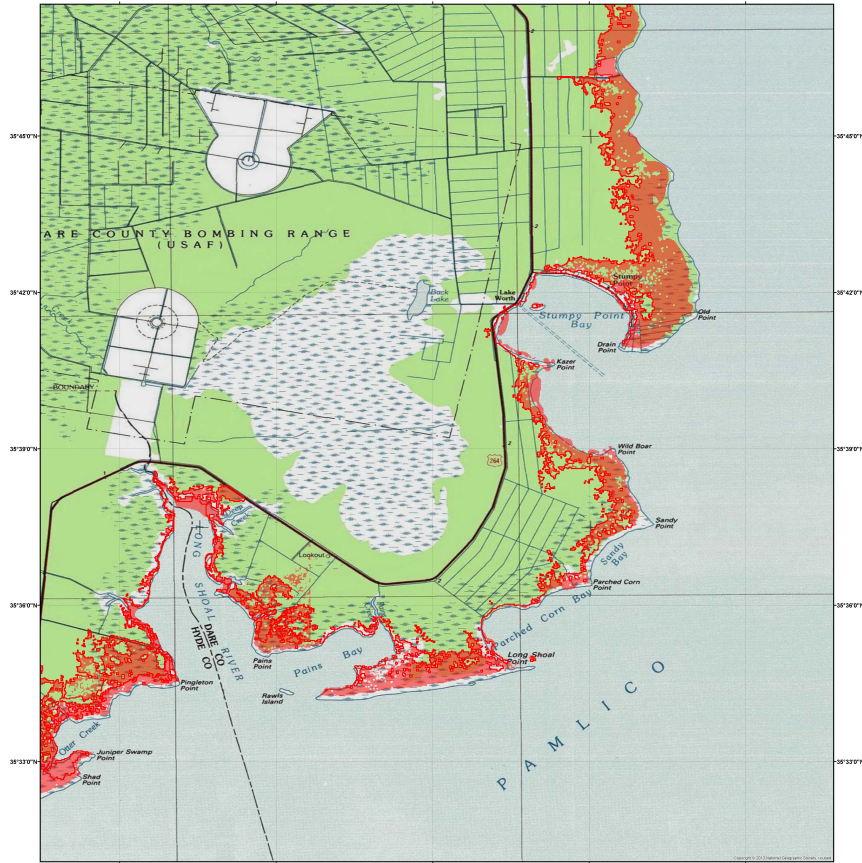
MAP BASE

Topographic base maps prepared by the U.S. Geological Survey as part of the 7.5-minute Quadrangle Map Series (originally 1:24,000 scale). Tsunami inundation line boundaries may reflect updated digital topographic data that can differ significantly from contours shown on the base map.

DISCLAIMER

The National Tsunami Hazard Mitigation Program (NTHMP), the University of Delaware (UD), and the University of Rhode Island (URI) make no representation or warranties regarding the accuracy of this inundation map nor the data from which the map was derived. Neither the NTHMP nor UD shall be liable under any circumstances for any direct, indirect, special, incidental or consequential damages with respect to any claim by any user or any third party on account of or arising from the use of this map.

Figure 18: Inundation map for emergency planning for Salvo, NC in 1:60,000 scale. The inundated area is shown in red, and the thick red line represents the inundation line for this particular area.



METHOD OF PREPARATION

The inundation mapping for Cape Hatteras NGDC DEM was funded by the National Tsunami Hazard Mitigation Program (NTHMP). Here, a brief description is provided about the process this map was generated through. For comprehensive information about the mapping process, one can refer to the inundation report referenced below.

Four sources were modeled for this work: two coseismic, a volcanic cone collapse, and a Submarine Mass Failure Source (SMF). Coseismic sources include a large earthquake in the Puerto Rico Trench (PRT) in the Caribbean Subduction Zone (CSZ), and another earthquake located on Azores-Gibraltar plate boundary. Both of these sources are generated according to the standard Ocean method. Cumbre Vieja Volcanic (CVJ) collapse located in Canary Islands is another significant tsunami source which threatens the location of study. A multi-fluid 3D Navier-Stokes solver (THETIS) was used to model this source. Finally a slide close to Cape Fear location was studied as the SMF tsunami. These landslide sources are all simulated with the NTHMP model.

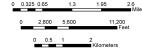
The bathymetry data is provided from the integrated bathymetric-topographic digital elevation model (Atlantic City NGDC DEM), generated by National Geospatial Data Center (NGDC), for high-resolution tsunami inundation mapping. For ocean basin tsunami propagation, the depth values were obtained from the 1 arc-minute ETOPO-1 database, while nearshore bathymetry and topography were obtained from NGDC's Coastal Relief Models, which are typically provided on a 3 arc-second grid.

We used the FUNWAVE-TVD model to simulate tsunami nearshore propagation and estuary inundation. FUNWAVE-TVD is a public domain open-source code that has been used for modeling tsunamis inside ocean basin, nearshore, and their inland inundation process. Four levels of nesting was performed in this project to bring the resolution from 1 arc minute (about 2 kilometers) in the ocean basin down to 1 arc-second (about 30 meters) nearshore. For each region, the highest resolution data was used to generate the inundation line from the extent of the inundated area. The accuracy of the inundation line shown on this map is constrained by several factors such as the accuracy of the models used here, as well as the accuracy of the bathymetry data. The inundation line depicts the envelope of the inundation lines for all the tsunami sources studied, not one particular source.

For further questions about the map contact James T. Kirby (tkirby@udel.edu).

**Tsunami INUNDATION MAP
 FOR EMERGENCY PLANNING**

August, 2015
 Scale 1:50,000



Tsunami sources modeled for Cape Hatteras, NGDC DEM

Source	Location	Arrival Time (hr)
Cape Fear Slide	76.00 W, 33.10 N	2.0
Puerto Rico Trench Zone (MR-0)	Caribbean Subduction Zone	4.5
Azores-Gibraltar Convergence Zone (MR-0.9.0)	Gibraltar Strait	6.0
Cumbre Vieja Volcanic Cone Collapse	Canary Islands	6.0

MAP EXPLANATION

- Tsunami Inundation Line
- Tsunami Inundated Area

PURPOSE OF THIS MAP

This tsunami inundation map was prepared to help coastal communities to identify their tsunami hazard. This map is not a legal document and does not meet disclosure requirements for real estate transactions nor for any other regulatory purpose. The inundation map has been obtained through using the best available scientific information. The inundation line represents the maximum tsunami runup extent utilizing a number of extreme, yet scientifically realistic, tsunami sources. This map is supposed to portray the worst case scenario and does not provide any further information about the return periods of the events studied here.

MAP BASE

Topographic base maps prepared by the U.S. Geological Survey as part of the 7.5-minute Quadrangle Map Series (originally 1:24,000 scale). Tsunami inundation line boundaries may reflect updated digital topographic data that can differ significantly from contours shown on the base map.

DISCLAIMER

The National Tsunami Hazard Mitigation Program (NTHMP), the University of Delaware (UD), and the University of Rhode Island (URI) make no representation or warranties regarding the accuracy of this inundation map nor the data from which the map was derived. Neither the NTHMP nor UD shall be liable under any circumstances for any direct, indirect, special, incidental or consequential damages with respect to any claim by any user or any third party on account of or arising from the use of this map.

Reference:
 "Tsunami Inundation Mapping for Cape Hatteras, NC NGDC DEM." Technical Report No. CACR-15-12, Center for Applied Coastal Research, University of Delaware.

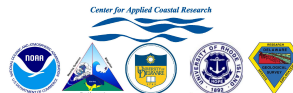
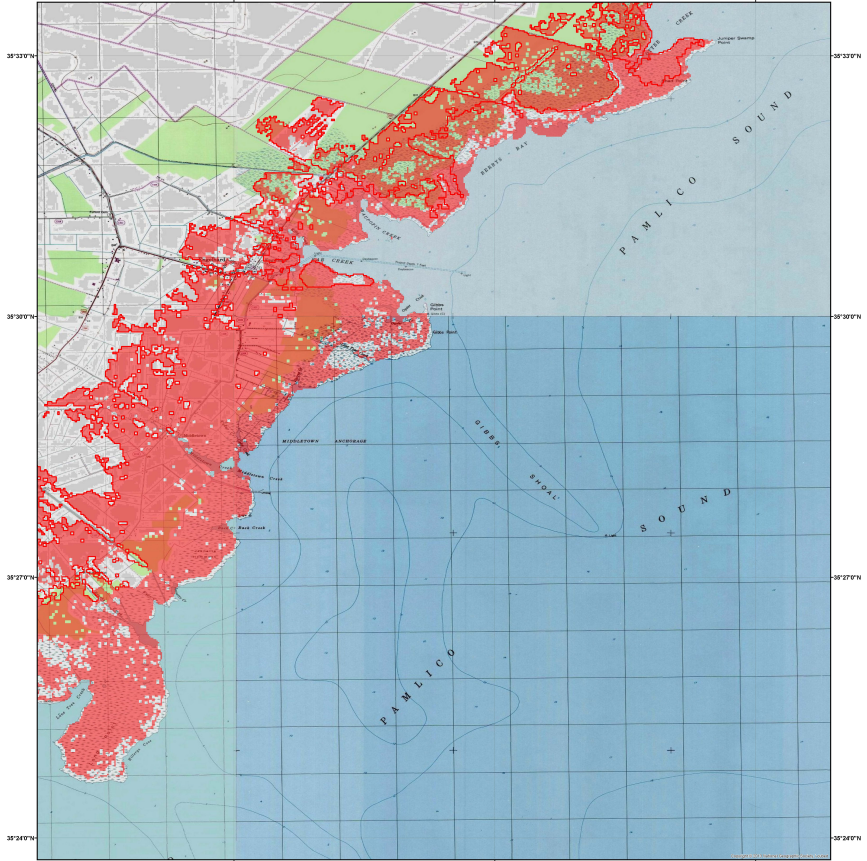


Figure 19: Inundation map for emergency planning for Stumpy Point, NC at 1:50,000 scale. The inundated area is covered in red, and the thick red line represents the inundation line for this particular area.



METHOD OF PREPARATION

The inundation mapping for Cape Hatteras NGDC DEM was funded by the National Tsunami Hazard Mitigation Program (NTHMP). Here, a brief description is provided about the process this map was generated through. For comprehensive information about the mapping process, one can refer to the inundation report referenced below.

Four sources were modeled for this work: two coseismic, a volcanic one collapse, and a Submarine Mass Failure Source (SMF). Coseismic sources include a large earthquake in the Puerto Rico Trench (PRT) in the Caribbean Subduction Zone (CSZ), and another earthquake located on Azores-Gibraltar plate boundary. Both of these sources are generated according to the standard Okada method. Cumbre Vieja Volcanic (CVJ) collapse located in Canary Islands is another significant tsunami source which threatens the location of study. A multi-fluid 3D Navier-Stokes solver (THETIS) was used to model this source. Finally, a slide close to Cape Fear location was studied as the SMF tsunami. These landslide sources are all simulated with the NTHMP model.

The bathymetry data is provided from the integrated bathymetric-topographic digital elevation model (Atlantic City NGDC DEM), generated by National Geophysical Data Center (NGDC) for high-resolution tsunami inundation mapping. For ocean basin tsunami propagation, the depth values were obtained from the 1 arc-minute ETOPO-1 database, while nearshore bathymetry and topography were obtained from NGDC's Coastal Relief Models, which are typically provided on a 3 arc-second grid.

We used the FUNWAVE-TVD model to simulate tsunami nearshore propagation and estuary inundation. FUNWAVE-TVD is a public domain open-source code that has been used for modeling tsunamis inside ocean basin, nearshore, and their inland inundation process. Four levels of nesting was performed in this project to bring the resolution from 1 arc minute (about 2 kilometers) in the ocean basin down to 1 arc sec (about 30 meters) nearshore. For each region, the highest resolution data was used to generate the inundation line from the extent of the inundated area. The accuracy of the inundation line shown on this map is constrained by several factors such as the accuracy of the models used here, as well as the accuracy of the bathymetry data. The inundation line depicts the envelope of the inundation lines for all the tsunami sources studied, not one particular source.

For further questions about the map contact James T. Kirby (tkirby@udel.edu).

Tsunami INUNDATION MAP FOR EMERGENCY PLANNING

August, 2015
 Scale 1:30,000

MAP EXPLANATION

Tsunami Inundation Line

Tsunami Inundated Area

PURPOSE OF THIS MAP

This tsunami inundation map was prepared to help coastal communities to identify their tsunami hazard. This map is not a legal document and does not meet disclosure requirements for real estate transactions nor for any other regulatory purpose. The inundation map has been obtained through using the best available scientific information. The inundation line represents the maximum tsunami runup extent utilizing a number of extreme, yet scientifically realistic, tsunami sources. This map is supposed to portray the worst case scenario and does not provide any further information about the return periods of the events studied here.

Tsunami sources modeled for Cape Hatteras, NGDC DEM

Source	Location	Arrival Time (hr)
Cape Fear Slide	76.00 W, 33.10 N	2.0
Puerto Rico Trench Zone (MR-0)	Caribbean Subduction Zone	4.5
Azores-Gibraltar Convergence Zone (MR-0, B-0)	Gibraltar Strait	6.0
Canary Vajaz-Volcanic Cone Collapse	Canary Islands	6.0

MAP BASE

Topographic base maps prepared by the U.S. Geological Survey as part of the 7.5-minute Quadrangle Map Series (originally 1:24,000 scale). Tsunami inundation line boundaries may reflect updated digital topographic data that can differ significantly from contours shown on the base map.

DISCLAIMER

The National Tsunami Hazard Mitigation Program (NTHMP), the University of Delaware (UD), and the University of Rhode Island (URI) make no representation or warranties regarding the accuracy of this inundation map nor the data from which the map was derived. Neither the NTHMP nor UD shall be liable under any circumstances for any direct, indirect, special, incidental or consequential damages with respect to any claim by any user or any third party on account of or arising from the use of this map.



Reference:
 Tehranyrad, B., Kirby, J. T. and Shi, F., 2015. "Tsunami Inundation Mapping for Cape Hatteras, NC NGDC DEM". Technical Report No. CACR-15-12, Center for Applied Coastal Research, University of Delaware.

Figure 20: Inundation map for emergency planning for Engelhard, NC at 1:30,000 scale. The inundated area is covered in red, and the thick red line represents the inundation line for this particular area.

References

- Amante, C. and Eakins, B.W., 2009, "ETOPO1 1 Arc-Minute Global Relief Model: Procedures, Data Sources and Analysis", NOAA Technical Memorandum NESDIS NGDC-24. National Geophysical Data Center, NOAA. doi:10.7289/V5C8276M.
- Abadie, S. M., Harris, J. C., Grilli, S. T., and Fabre, R., 2012, "Numerical modeling of tsunami waves generated by the flank collapse of the Cumbre Vieja Volcano (La Palma, Canary Islands) Tsunami source and near field effects", *Journal of Geophysical Research*, **117**(C5), C05030, doi:10.1029/2011JC007646.
- Atlantic and Gulf of Mexico Tsunami Hazard Assessment Group, 2008, "Evaluation of Tsunami Sources with the Potential to Impact the U.S. Atlantic and Gulf Coasts - A Report to the Nuclear Regulatory Commission", U.S. Geological Survey Administrative Report.
- Barkan, R., Ten Brink, U. S., and Lin, J., 2009, "Far field tsunami simulations of the 1755 Lisbon earthquake: Implications for tsunami hazard to the US East Coast and the Caribbean", *Marine Geology*, **264**, 109-122.
- Chen, Q., 2006, "Fully nonlinear Boussinesq-type equations for waves and currents over porous beds", *J. Engin. Mech.* **132**, 220-230.
- Divins, D. L., and Metzger, D., 2003, "NGDC coastal relief model. National Geophysical Data Center", (<http://www.ngdc.noaa.gov/mgg/coastal/coastal.html>).

- Geist, E. L., Lynett, P. J., and Chaytor, J. D., 2009, "Hydrodynamic modeling of tsunamis from the Currituck landslide", *Marine Geology*, **264**, 41-52.
- González, F. I., et al., 2007, "Scientific and technical issues in tsunami hazard assessment of nuclear power plant sites." NOAA Tech. Memo. OAR PMEL 136.
- Grilli, S. T., O'Reilly, C., Harris, J. C., Tajalli Bakhsh, T., Tehranirad, B., Banihashemi, S., Kirby, J. T., Baxter, C. D. P., Eggeling, T., Ma, G., and Shi, F., 2014, "Modeling of SMF tsunami hazard along the upper US East Coast: Detailed impact around Ocean City, MD", *Natural Hazards*, in press.
- Grilli, A. R., and Grilli, S. T., 2013a, "Modeling of tsunami generation, propagation and regional impact along the upper US East Coast from the Puerto Rico trench", Research Report, No. CACR-13-02, Center for Applied Coastal Research, University of Delaware. <http://chinacat.coastal.udel.edu/nthmp/grilli-grilli-cacr-13-03.pdf>
- Grilli, A. R., and Grilli, S. T., 2013b, "Modeling of tsunami generation, propagation and regional impact along the upper US East Coast from the Azores convergence zone", Research Report, No. CACR-13-04, Center for Applied Coastal Research, University of Delaware. <http://chinacat.coastal.udel.edu/nthmp/grilli-grilli-cacr-13-02.pdf>
- Grilli, A. R., and Grilli, S. T., 2013c, "Far-field tsunami impact on the U.S. East Coast from and extreme flank collapse of the Cumbre Vieja Volcano (Canary Islands)", Research Report, No. CACR-13-03, Center for Applied Coastal Research, University of Delaware. <http://chinacat.coastal.udel.edu/nthmp/grilli-grilli-cacr-13-04.pdf>

- Grilli, S. T., O'Reilly, C. and Tajalli Bakhsh, T., 2013, "Modeling of SMF tsunami generation and regional impact along the upper US East Coast", Research Report No. CACR-13-05, Center for Applied Coastal Research, University of Delaware. <http://chinacat.coastal.udel.edu/nthmp/grilli-et-al-cacr-13-05.pdf>
- Grilli, S. T., Dubosq, S., Pophet, N., Perignon, Y., Kirby, J. T., and Shi, F., 2010, "Numerical simulation and first-order hazard analysis of large co-seismic tsunamis generated in the Puerto Rico trench: near-field impact on the North shore of Puerto Rico and far-field impact on the US East Coast", *Natural Hazards and Earth System Sciences*, **10**, 2109-2125.
- Grilli, S. T., Taylor, O. D. S., Baxter, C. D., and Marezki, S. , 2009, "A probabilistic approach for determining submarine landslide tsunami hazard along the upper east coast of the United States", *Marine Geology*, **264** (1), 74-97.
- Tehranirad, B., Harris, J. C., Grilli, A. R., Grilli, S. T., Abadie, S., Kirby, J. T., Shi, F., 2014, "Far-field tsunami hazard on the western European and US east coasts from a large scale flank collapse of the Cumbre Vieja volcano, La Palma", *submitted to Pure and Applied Geophysics*.
- Harris, J. C., Grilli, S. T., Abadie, S., and Tajalli Bakhsh, T. , 2012, "Near-and far-field tsunami hazard from the potential flank collapse of the Cumbre Vieja Volcano", *In Proceedings of the 22nd Offshore and Polar Engng, Conf.(ISOPE12)*, Rodos, Greece, June 17-22, 2012).
- Kirby, J. T., Shi, F., Tehranirad, B., Harris, J. C., and Grilli, S. T., 2013, "Dispersive

tsunami waves in the ocean: Model equations and sensitivity to dispersion and Coriolis effects”, *Ocean Modelling*, **62**, 39-55.

Ma, G., Shi, F., and Kirby, J. T., 2012, “Shock-capturing non-hydrostatic model for fully dispersive surface wave processes”, *Ocean Modelling*, **43**, 22-35.

NOAA National Geophysical Data Center, U.S. Coastal Relief Model, Retrieved date goes here, <http://www.ngdc.noaa.gov/mgg/coastal/crm.html>

Parker, B., Milbert, D., Hess, K., and Gill, S., 2003, “National VDatumThe implementation of a national vertical datum transformation database”, *In Proceeding from the US Hydro2003 Conference*, 24-27.

Shi, F., Kirby, J. T., Harris, J. C., Geiman, J. D., and Grilli, S. T., 2012a , “A high-order adaptive time-stepping TVD solver for Boussinesq modeling of breaking waves and coastal inundation”, *Ocean Modelling*, **43-44**, 36-51.

Shi, F., Kirby, J. T., and Tehranirad, B. , 2012 b, “Tsunami benchmark results for spherical coordinate version of FUNWAVE-TVD (Version 2.0)” , Research Report, No. CACR 2012-02, Center for Applied Coastal Research Report, University of Delaware, Newark, Delaware. <http://chinacat.coastal.udel.edu/papers/shi-et-al-cacr-12-02-version2.0.pdf>

Shi, F., Kirby, J. T., Tehranirad, B., Harris, J. C., Grilli, S. T., 2011, “FUNWAVE-TVD Fully Nonlinear Boussinesq Wave Model with TVD Solver Documentation and Users Manual”, Research Report, No. CACR-11-04, Center for Applied Coastal Research Report, University of Delaware, Newark, Delaware. <http://chinacat.coastal.udel.edu/papers/shi-et-al-cacr-11-04-version2.1.pdf>

- Synolakis, C. E., Bernard, E. N., Titov, V. V., Kânoglu, U. and González, F. I., 2008, “Validation and verification of tsunami numerical models”, *Pure and Applied Geophysics*, **165**, 2197-2228.
- Taylor, L. A., Eakins, B. W., Carignan, K. S., Warnken, R. R., Schoolcraft, D. C., and Sharman, G. F., 2008, “Digital elevation model for Cape Hatteras, North Carolina: procedures, data, sources, and analysis.” *National Oceanic and Atmospheric Administration*, National Geophysical Data Center, Boulder, Colorado, USA.
- Tehrani-rad, B., Shi, F., Kirby, J. T., Harris, J. C., and Grilli, S. T., 2011, “Tsunami benchmark results for fully nonlinear Boussinesq wave model FUNWAVE-TVD. Version 1.0”, Research Report, No. CACR-11-02, Center for Applied Coastal Research, University of Delaware.
- Tehrani-rad, B., Kirby, J. T., Ma G., and Shi, F., 2012, “Tsunami benchmark results for non-hydrostatic wave model NHWAVE version 1.1.”, Tech. rep., Research Report, No. CACR-12-03, Center for Applied Coastal Research Report, University of Delaware, Newark, Delaware. <http://chinacat.coastal.udel.edu/papers/tehrani-rad-et-al-cacr-11-02-version1.0.pdf>
- Yeh, H., 2007, “Tsunami load determination for on-shore structures”, *In Proc. Fourth International Conference on Urban Earthquake Engineering*, 415-422
- Yeh, H. H. J., Robertson, I., and Preuss, J., 2005, “Development of design guidelines for structures that serve as tsunami vertical evacuation sites (p. 34)”, Washington State Department of Natural Resources, Division of Geology and Earth Resources.

Appendix A Gridded Data Information

In order to facilitate GIS work used to report tsunami inundation simulation results, the output data is saved in ESRI Arc ASCII grid format, which is compatible with GIS software such as ArcGIS. For each file, the grid spacing could have two different values (25.21,30.87) m, and (100.84,123.48) m depending on the domain, and the coordinate system is based on Geographic decimal degrees (Longitude and Latitude). Also, the vertical datum of all rasters is mean high water (MHW), and the horizontal datum is World Geodetic System of 1984 (WGS 84). The name of each file implies some information about the file contents as well. The first part defines the type of data and could be one of the following,

Inun ... Onshore inundation depth

Inun_area ... Depicts the inundated area (inundation line)

Hmax... Maximum recorded offshore water surface elevation

Mfmx ... Maximum recorded onshore momentum flux

Uwet... Maximum recorded onshore velocity

Udry... Maximum recorded offshore velocity

vorm... Maximum recorded offshore vorticity

depth... depth

The rasters including inundation depth, maximum momentum flux, and maximum onshore velocity (udry) are only meaningful onshore (for initially dry points, basically inundated points), and by using the bathymetry data, nodata values have been defined for onshore

points in these rasters (nodata value=-9999). The reverse is performed for maximum vorticity and maximum offshore velocity (uwet) rasters by setting the offshore values to -9999 to just consider the initially wet points in the domain. The second part of the raster name defines the tsunami source used to obtain that data. This could be seven different sources and are categorized as follows,

SMF... Submarine Mass Failure

PR... Puerto Rico Trench

LIS... Lisbon Source

CVV... Cumbre Vieja Volcanic Collapse.

In each file, the grid sizes (mx,ny), the coordinates for south west corner of the domain, and the grid size are included in the file heading as well as a nodata value through the following format,

ncols	9397
nrows	12853
xllcorner	-75.580046296295
yllcorner	37.679953703705
cellsize	9.2592589999999e-005
NODATA_value	-9999

Beneath the file heading, the corresponding values to each point are written in the file with the format that starts from the southwest edge of the domain, and writes each row from western to eastern boundaries of the domain from south to north. This format is different from FUNWAVE-TVD output format, and it is flipped upside down. Therefore, the FUNWAVE-TVD outputs are flipped vertically to match with ESRI Arc ASCII grid format here. The last part of the file name represents the name of the grid that the raster is built for. The names for each grid can be found in table 1. Therefore, the raster “Inun_CVV80_ch_1arc_1.asc” refers to the inundation depth data for the CVV80 source for the first Cape Hatteras grid (CH_1) with the resolution of roughly 30 m ($(dx,dy) = (25.21,30.87)$ m (corresponding to 1 arc-sec in spherical coordinates)) described in the main document (Table 1). Finally, the inundation lines are saved as shape files (.shp) for each domain and have the same name format and projection with rasters. The combined inundation line, which depicts the inundation line for the whole domain based on the finest results available in any area, is presented as “final_inundation_line.shp” in the main folder of the results. Figure 21 shows the way the data is organized. There exists a folder for each domain (CH_1, CH_2) and each of them involve seven folders for each tsunami source studied here. The raster data and inundation line shape file explained above are located in these folders.

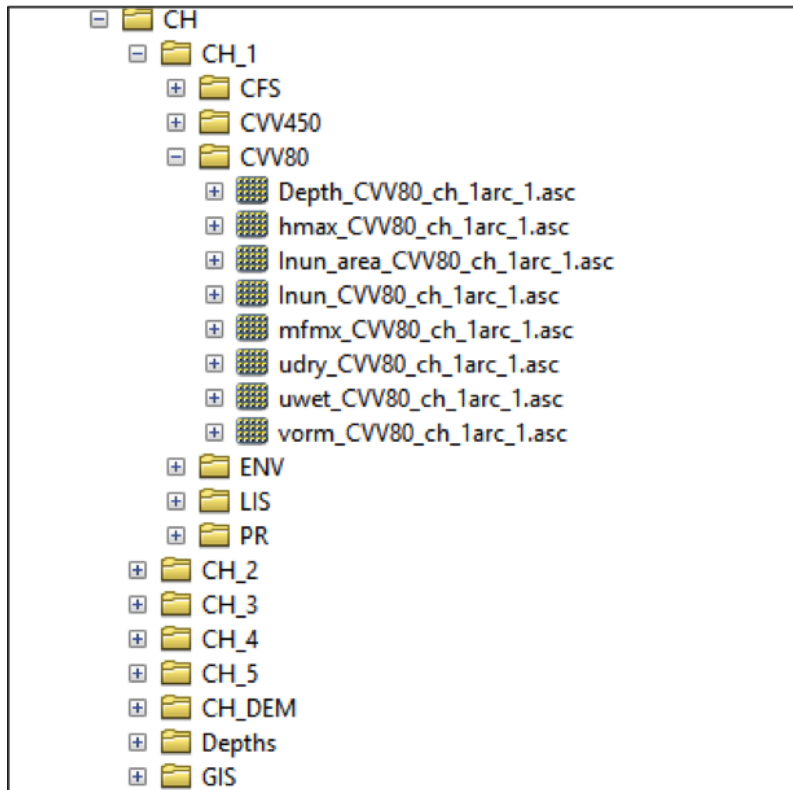


Figure 21: Screen shot of the results folder

Appendix B Modeling inputs

A brief description of model inputs that were saved during the simulation process is provided here. These files provide sufficient data for researchers who are interested to model the tsunamis on their own. In the main results folder, there exist a folder called “input” (Figure 22). In this folder, three categories of input files exist. First, depth files for each domain are provided. The file name represents the location of the bathymetry data, and one could figure it out using Table 1. For example, if the file name is “CH_1arc_1”, it is the bathymetry data for the CH_1arc_1 domain defined previously in this report (Table 1, Figure 7). Next, the coupling file for each simulation domain is provided for five sources studied in this work. Coupling files force the boundary conditions on the domain based on recordings from coarser grids in order to simulate tsunamis with finer resolution. Similar to the bathymetry files, names of coupling files show their domain, as well as their source. For instance, the file “CVV80_ch_1arc_3.txt” is the coupling file for CVV80 source for the CH_1arc_3 domain (Figure 9, Table 1). The coupling files can be easily distinguished from bathymetry files because bathymetry files do not have a tsunami source label included in their names.

General instructions for configuring input files for FUNWAVE-TVD may be found in the program’s users manual (Shi et al., 2011), available at, <http://chinacat.coastal.udel.edu/papers/shi-et-al-cacr-11-04-version2.1.pdf>.

```
[(kirby:btrad)@mills input]$ ls
CFS_ch_1arc_1.txt.gz  CW450_ch_1arc_1.txt.gz  LIS_ch_1arc_3.txt.gz
CFS_ch_1arc_2.txt.gz  CW450_ch_1arc_2.txt.gz  LIS_ch_1arc_4.txt.gz
CFS_ch_1arc_3.txt.gz  CW450_ch_1arc_3.txt.gz  LIS_ch_1arc_5.txt.gz
CFS_ch_1arc_4.txt.gz  CW450_ch_1arc_4.txt.gz  LIS_ch_4arc.txt.gz
CFS_ch_1arc_5.txt.gz  CW450_ch_1arc_5.txt.gz  PR_ch_1arc_1.txt.gz
CFS_ch_4arc.txt.gz    CW450_ch_4arc.txt.gz    PR_ch_1arc_2.txt.gz
ch_1arc_1             CW80_ch_1arc_1.txt      PR_ch_1arc_3.txt.gz
ch_1arc_2.gz         CW80_ch_1arc_2.txt.gz   PR_ch_1arc_4.txt.gz
ch_1arc_3.gz         CW80_ch_1arc_3.txt.gz   PR_ch_1arc_5.txt.gz
ch_1arc_4.gz         CW80_ch_1arc_4.txt.gz   PR_ch_4arc.txt.gz
ch_1arc_5.gz         CW80_ch_1arc_5.txt.gz   x.txt.gz
ch_1arcsec_1.gz      CW80_ch_4arc.txt.gz     y.txt.gz
ch_4arcsec_gauge.gz  LIS_ch_1arc_1.txt.gz
ch_4arcsec.gz        LIS_ch_1arc_2.txt.gz
[(kirby:btrad)@mills input]$
```

Figure 22: Screen shot of the input folder

-

Appendix C Inundation Mapping Guidelines

The development of inundation maps for tsunami hazard assessment and evacuation planning is governed by three documents and a related appendix. These include:

1. NTHMP Inundation Modeling Guidelines

Available at: http://nws.weather.gov/nthmp/modeling_guidelines.html

2. Mapping Guidelines Appendix A

Available at: http://nws.weather.gov/nthmp/documents/MnM_guide_appendix-final.docx

3. NTHMP Tsunami Evacuation Mapping Guidelines

Available at:

<http://nws.weather.gov/nthmp/documents/NTHMPTsunamiEvacuationMappingGuidelines.pdf>

4. NTHMP Guidelines for Establishing Tsunami Areas of Inundation for Non-Modeled or Low-Hazard Areas

Available at:

<http://nws.weather.gov/nthmp/documents/Inundationareaguidelinesforlowhazardareas-Final092611.docx>